

AIP CANADA SUPPLEMENT 56/23

NEW VISUAL FLIGHT RULES (VFR) CHECKPOINTS AND ARRIVAL/DEPARTURE ROUTES AMENDMENTS AT THE KITCHENER/WATERLOO AIRPORT (CYKF)

Amendments have been made to the Kitchener/Waterloo Airport (CYKF) VFR Terminal Procedures Chart (VTPC) to increase safety for arriving and departing aircraft. Pilots arriving at, or departing from, the CYKF Airport are expected to follow the published VFR routes, unless alternative instructions are provided. Pilots must remain VFR at all times.

New VFR checkpoints and arrival/departure routes for the CYKF control zone have been created. To the North, checkpoint AUTOMALL has been created to add an additional entry route, replacing HWY 7/HWY 6. To the South, a new checkpoint DUMFRIES has been created replacing HWY 8/HWY 401.

The Canada Flight Supplement (CFS) VTPCs and the VFR terminal area charts (VTAs) will be amended accordingly. A new chart detailing the new arrival/departure routes will also be added to the CFS (see chart in Figure 1 and Table 1). The text in the CFS, "PROCEDURES (PRO)" section will be modified with the following additions:

VFR ARR/DEP ROUTES – ARRIVALS

NOT BELOW 2600 ASL until advised by ATC. Follow route as depicted then join circuit as per Tower clearance.

- Dumfries: From the West remain south of Hwy 401 until passing the Dumfries flyover. Then follow route inbound. **Not BELOW 2600 FT ASL**
- Maryhill: follow route inbound. Pass one mile west of Maryhill. **Not BELOW 2600 FT ASL**
- Sunrise: Proceed to the Sunrise Centre then follow route inbound. **Not BELOW 2600 FT ASL**

VFR ARR/DEP ROUTES – DEPARTURES

Follow route as depicted on VTPC.

- St. Jacobs: Follow route to St. Jacobs.
- Conestoga: follow route to Conestoga College. Remain North of HWY 401 until clear of the Control Zone.
- AutoMall: follow route to AutoMall.
- Puslinch: follow route to the HWY 401/Puslinch Lake. Remain North of HWY 401 until clear of CZ.

All VFR aircraft should anticipate arrival and departure instructions from air traffic control (ATC).

These changes will take effect on 2 November 2023.

KITCHENER / WATERLOO VFR TERMINAL PROCEDURES CHART

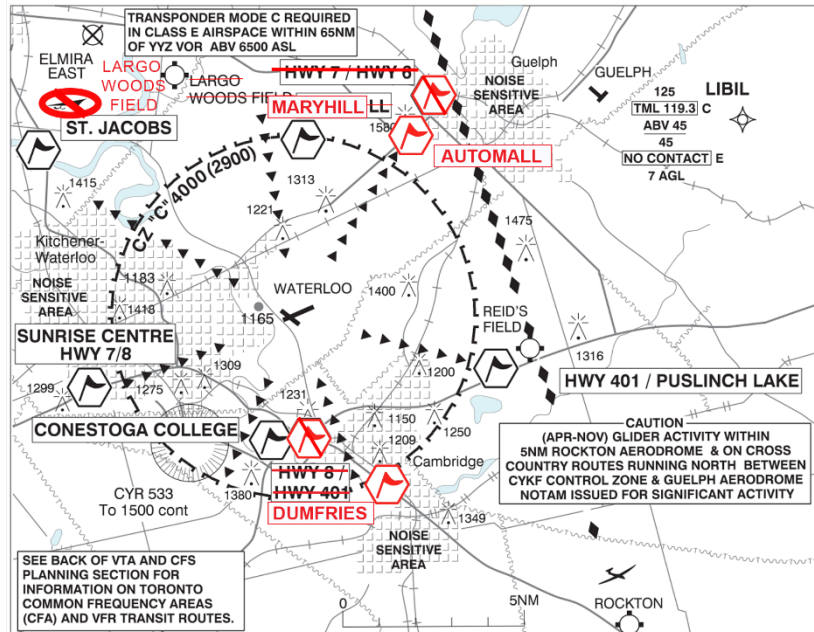


Figure 1: Kitchener/Waterloo Airport (CYKF) VFR Terminal Procedures Chart (NOT SUITABLE FOR NAVIGATION)

Table 1: VFR Reporting Points

Location	IDENT	Latitude/Longitude
Conestoga College	VCCOL	N 43° 23' 22" W 080° 24' 38"
AUTOMALL	VCHWE	N 43° 32' 12" W 080° 19' 02"
DUMFRIES	VCAYT	N 43° 23' 12" W 080° 20' 15"
HWY 401 / PUSLINCH LAKE	VCFOR	N 43° 26' 00" W 080° 16' 00"
Maryhill	VCMYH	N 43° 32' 04" W 080° 23' 27"
ST. JACOB'S	VCJCB	N 43° 32' 00" W 080° 33' 00"
Sunrise Centre HWY7/8	VCSRS	N 43° 25' 01" W 080° 31' 02"

For further information, please contact:

NAV CANADA
Customer Service
151 Slater Street, Suite 120
Ottawa, ON K1P 5H3

Tel.: 800-876-4693
Fax: 877-663-6656
E-mail: service@navcanada.ca



Chris Bowden
Director, Aeronautical Information Management and Flight Operations