

AIP CANADA SUPPLEMENT 52/23

AERODROME CONSTRUCTION – CYXE SASKATOON/JOHN G. DIEFENBAKER INTL

(Replaces AIP Canada Supplement 27/23)

Introduction

Saskatoon/John G. Diefenbaker Intl (CYXE) is undergoing runway, taxiway, and apron rehabilitation on runway 09/27, taxiway F, and Aprons III and V.

Validity

The construction project is expected to begin on approximately 1 June 2023 and be completed on approximately 30 September 2023.




Use of NOTAM with this AIP Supplement

NOTAMs are used to manage short-term temporary changes to aeronautical information. AIP Supplements are used to manage long-term temporary changes to aeronautical information.

A current NOTAM supersedes any information contained within this AIP Supplement.

Changes to the AIP Supplement promulgated through NOTAM will be incorporated into this AIP Supplement and the NOTAM will be canceled.

Legend

	Application/Symbol	Colour
Closed		Red
Runway Available for Taxi Only		Amber
Construction Activity Area		Grey

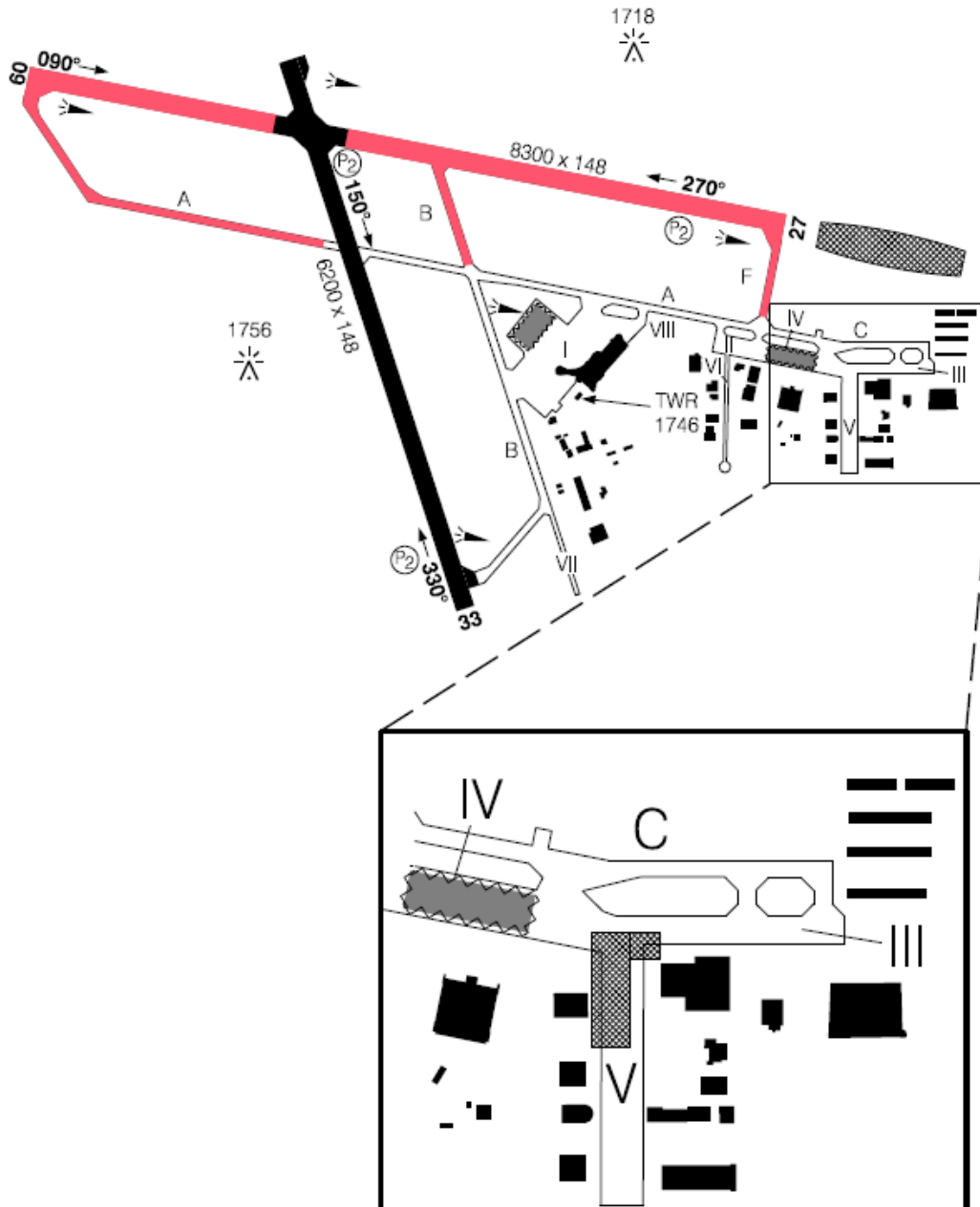
Phase 1

Construction Period

- Approximately 1 June 2023 to approximately 14 August 2023

Construction Area Depictions

Phase 1



Closed Areas and Restrictions

- Runway 09/27 closed
- Taxiway A closed west of runway 15/33
- Taxiway B closed north of taxiway A
- Taxiway F closed
- Apron V restricted to aircraft with wingspan less than 15 metres. Larger aircraft permitted under tow with advance notice.
- Helicopter operations prohibited on or in the vicinity of Apron V

Re-Opened Areas

- NIL

Operational Procedures During the Construction Period

- Taxiway B and a portion of runway 09/27 may be available for taxiing during some time periods and will be reflected by the removal of their NOTAMs.
- Helicopter operations prohibited on or in the vicinity of Apron V

Instrument Procedures – Temporary Long-Term Changes (3 months or greater)

- Refer to NOTAM

Runway Physical Changes

Declared Distances	09	27	15	33
TORA	Not Usable	Not Usable	6200	6200
TODA	Not Usable	Not Usable	7184	7184
ASDA	Not Usable	Not Usable	6200	6200
LDA	Not Usable	Not Usable	6200	6200

Other Hazards

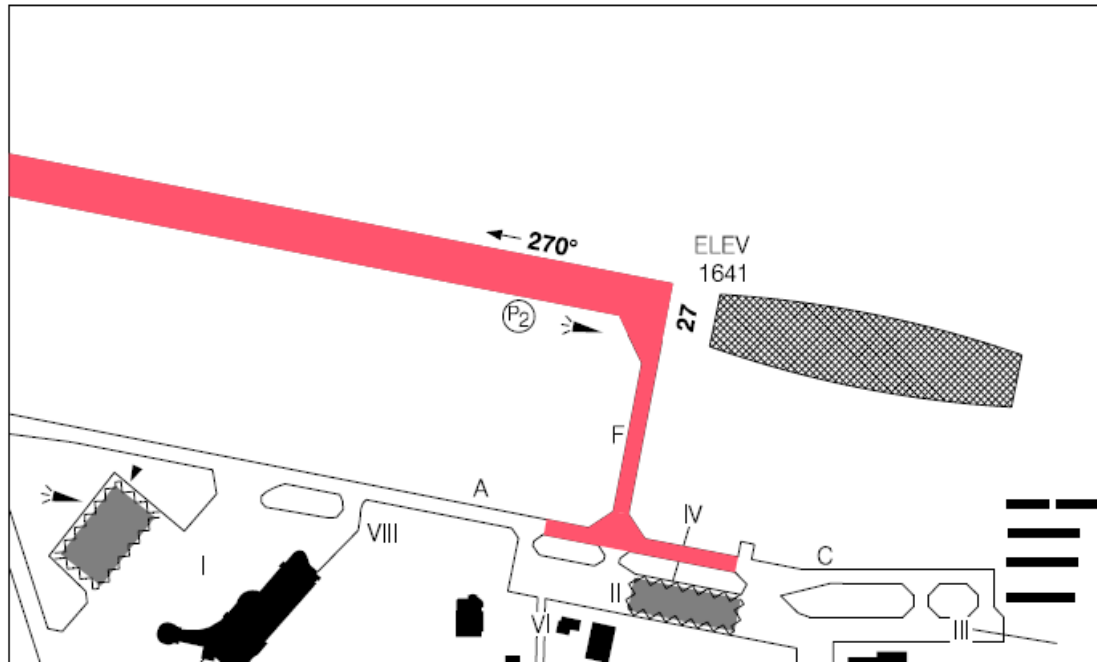
- NIL

Phase 2**Construction Period**

- Two (2) days during phase 1. Will take place prior to 30 July 2023 and will be notified by NOTAM.

Construction Area Depictions

Phase 2



Closed Areas and Restrictions

Same closed areas and restrictions noted in phase 1 with the addition of:

- Taxiway A closed east of Apron II entrance
- Taxiway C closed west of Apron V entrance
- Apron IV entrance at taxiway F closed

Re-Opened Areas

- NIL

Operational Procedures During the Construction Period

- Taxiway B and a portion of runway 09/27 may be available for taxiing during some time periods and will be reflected by the removal of their NOTAMs.

Instrument Procedures – Temporary Long-Term Changes (3 months or greater)

- Refer to NOTAM

Runway Physical Changes

- See phase 1 declared distances

Other Hazards

- NIL

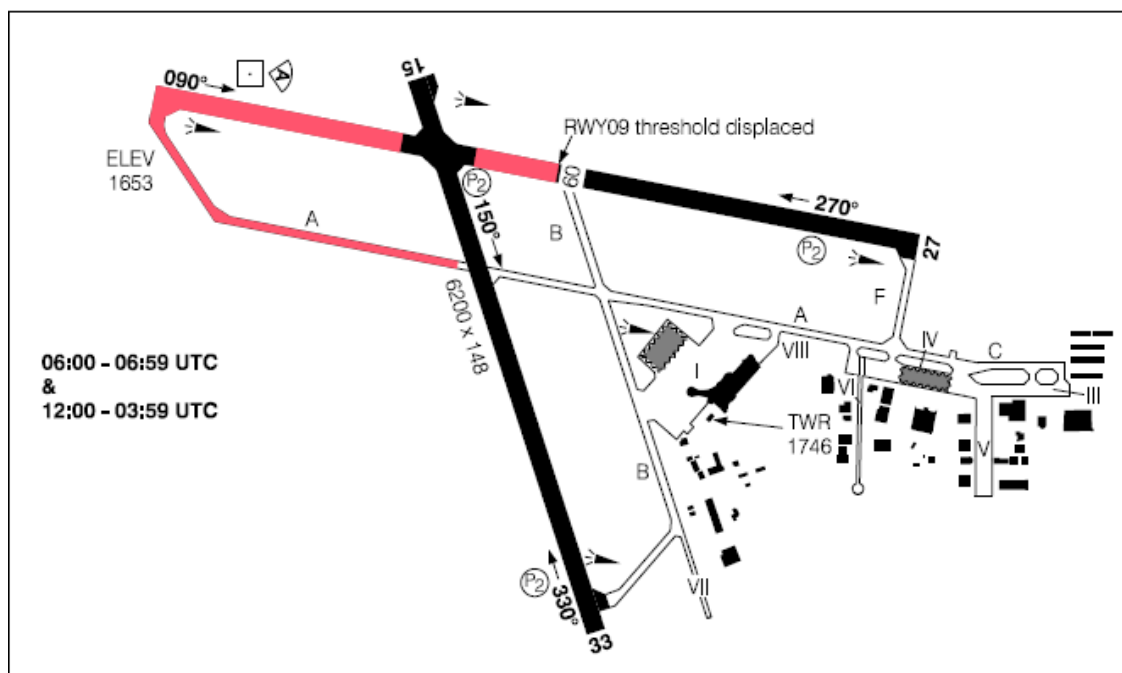
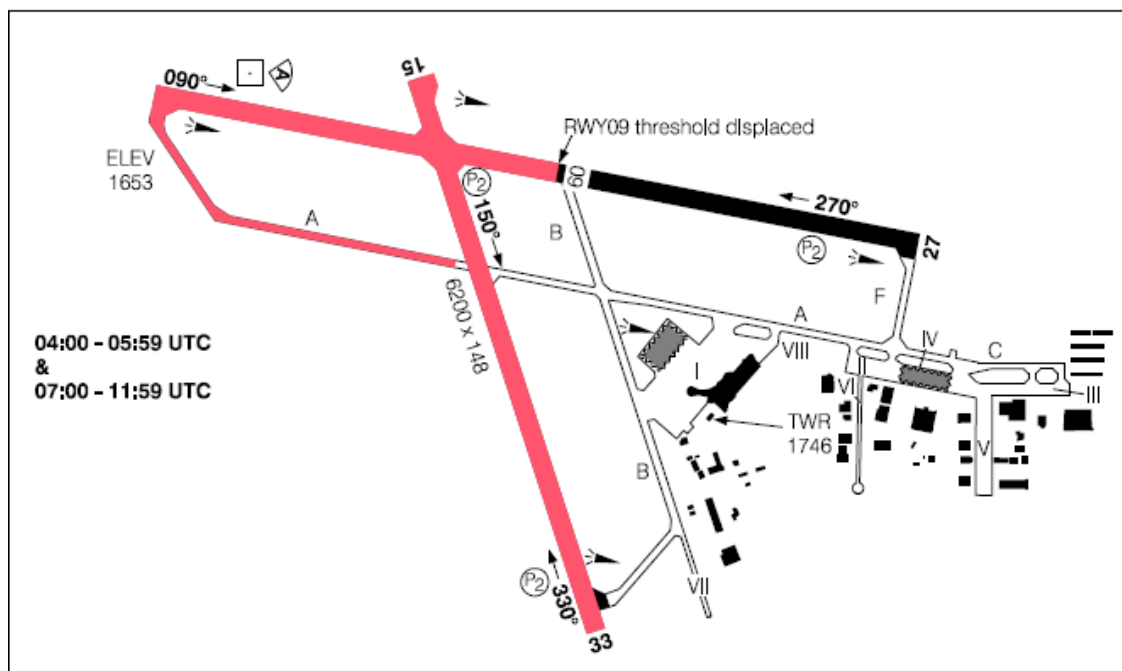
Phase 3

Construction Period

- Approximately 14 August 2023 to approximately 30 August 2023

Construction Area Depictions

- Phase 3



Closed Areas and Restrictions

Daily 06:00–06:59 UTC (00:00–00:59 CST) & 12:00–03:59 UTC (06:00–21:59 CST)

- First 4,461 feet of runway 09 closed
- Taxiway A closed west of runway 15/33
- Runway 27 downgraded to AGN II Non-Precision
- Runway 09 downgraded to AGN II Non-Instrument

- Runway 15/33 downgraded to AGN IIIB Non-Instrument **06:00-06:59 UTC only**

Nightly, 04:00-05:59 UTC (22:00-23:59 CST) and 07:00-11:59 UTC (01:00-05:59 CST)

- First 4,461 feet of runway 09 closed
- Taxiway A closed west of runway 15/33
- Runway 15/33 closed
- Runway 27 downgraded to AGN II Non-Precision
- Runway 09 downgraded to AGN II Non-Instrument

Re-Opened Areas

- Taxiway B north of A
- Taxiway F
- Portion of runway 09/27

Operational Procedures During the Construction Period

- Recommendation: departures use runway 09, arrivals use runway 27 when weather conditions permit

Instrument Procedures – Temporary Long-Term Changes (3 months or greater)

- Refer to NOTAM

Runway Physical Changes

Declared Distances	All Times		0400-0559 UTC & 0700-1159 UTC		0600-0659 UTC		1200-0359 UTC	
	09	27	15	33	15	33	15	33
TORA	3839	3839	Not Usable		6200	6200	6200	6200
TODA	4823	3839	Not Usable		7184	7184	7184	7184
ASDA	3839	3839	Not Usable		6200	6200	6200	6200
LDA	3839	3839	Not Usable		6200	6200	6200	6200
RUNWAY CERT	AGN II Non-Instrument	AGN II Non-Precision	Not Usable		AGN IIIB Non-Instrument		AGN IIIB Non-Precision	

Other Hazards

- Runway 09/27 approach lighting unserviceable
- Runway 27 PAPI unserviceable

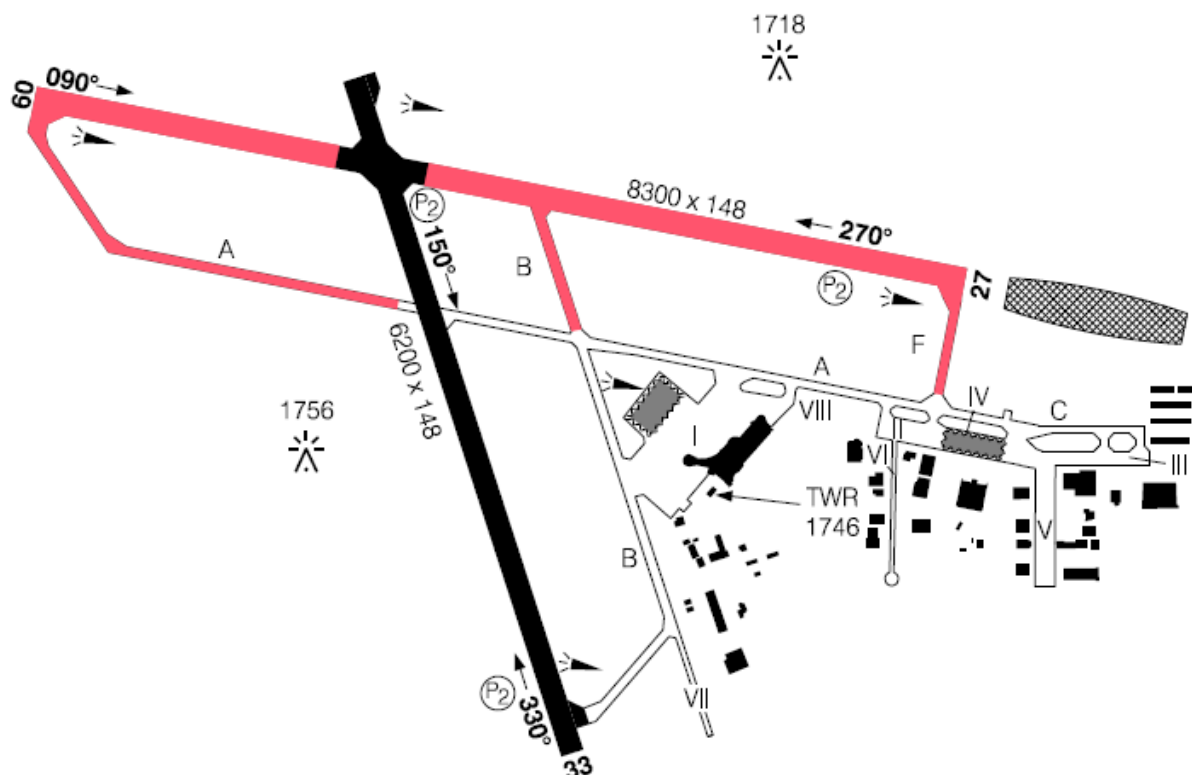
Phase 4

Construction Period

- Approximately 31 August 2023 to approximately 30 September 2023

Construction Area Depictions

Phase 4



Closed Areas and Restrictions

- Runway 09/27 closed
- Taxiway A closed west of runway 15/33
- Taxiway B closed north of taxiway A
- Taxiway F closed

Re-Opened Areas

- Runway 15/33

Operational Procedures During the Construction Period

- Taxiway B and a portion of runway 09/27 may be available for taxiing during some time periods and will be reflected by the removal of their NOTAMs.

Instrument Procedures – Temporary Long-Term Changes (3 months or greater)

- Refer to NOTAM

Runway Physical Changes

Declared Distances	09	27	15	33
TORA	Not Usable	Not Usable	6200	6200
TODA	Not Usable	Not Usable	7184	7184
ASDA	Not Usable	Not Usable	6200	6200
LDA	Not Usable	Not Usable	6200	6200

Other Hazards

- NIL

Further Information

Saskatoon Airport Authority
306-975-4013
dm@skyxe.ca



Chris Bowden
Director, Aeronautical Information Management and Flight Operations