

# AIP CANADA SUPPLEMENT 50/23

## AERODROME CONSTRUCTION – CYXC CRANBROOK CANADIAN ROCKIES INTL

### Introduction

The Cranbrook Canadian Rockies International Airport is planning an airfield lighting rehabilitation of its runway and taxiway edge lighting and airfield signage.

There is one phase of construction activity taking place August 21, 2023 to October 31, 2023. During this phase of construction, any work area described below may be closed by NOTAM for multiple weeks but not continuously.

### Validity

- **August 21, 2023 1200 UTC (0600 MDT) to October 31, 2023 0000 UTC (1800 MDT)**




### Use of NOTAM with this AIP Supplement

NOTAMs are used to manage short term temporary changes to aeronautical information. AIP Supplements are used to manage long term temporary changes to aeronautical information.

A current NOTAM supersedes any information contained within this AIP Supplement.

Changes to the AIP Supplement promulgated through NOTAM will be incorporated into this AIP Supplement and the NOTAM will be canceled.

### Legend

	Application/Symbol	Colour
Closed		Red
Runway Available for Taxi Only		Amber
Construction Activity Area		Grey

**Figure 1: Standard Legend for Construction Activity on Aerodrome Charts and all Other Images.**

### Phase 1

#### Construction Period

- **August 21, 2023 1200 UTC (0600 MDT) to October 31, 2023 0000 UTC (1800 MDT)**

#### Construction Area Depictions

##### Phase 1

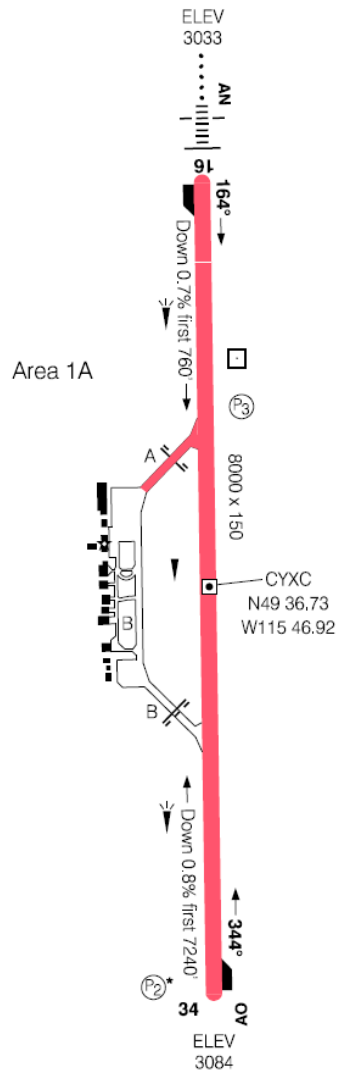


Figure 2: Work area 1A

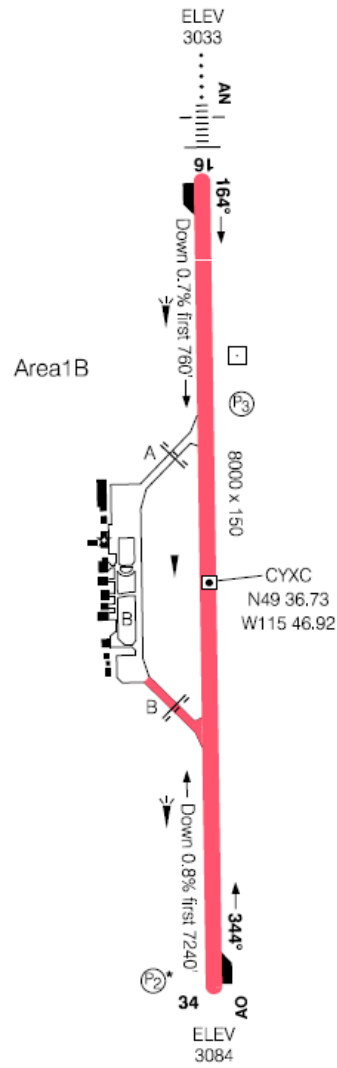


Figure 3: Work area 1B

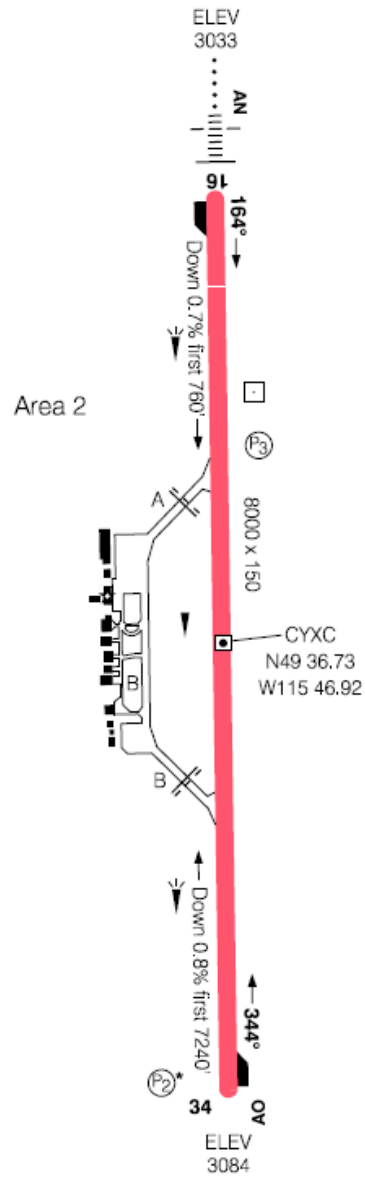
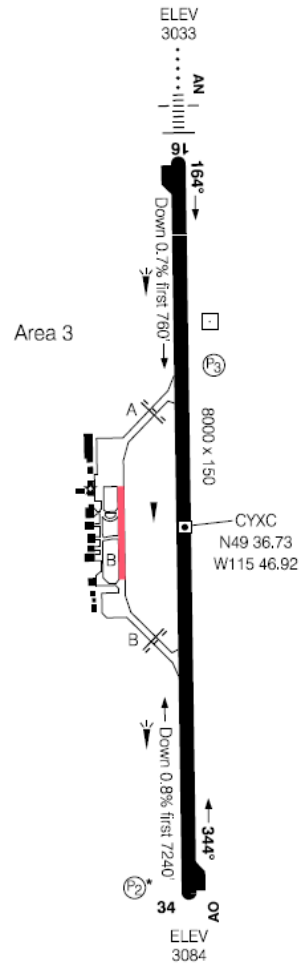


Figure 4: Work area 2



**Figure 5: Work area 3**

### Closed Areas and Restrictions

#### Area 1A:

- Runway 16/34 closed except Forestry, scheduled and medevac flights with 30 minutes prior notice required (PNR)
- Taxiway A closed

#### Area 1B:

- Runway 16/34 closed except Forestry, scheduled and medevac flights with 30 minutes PNR
- Taxiway B (from north edge of Forestry to runway)
  - Closed nightly 0300 UTC (2100 MDT) to approximately 1100 UTC (0600 MDT)
  - Available for Forestry only with 30 minutes PNR 2330 UTC (1730 MDT) to 0300 UTC (2100 MDT)

Area 2:

- Runway 16/34 closed except Forestry, scheduled and medevac flights with 30 minutes PNR

Area 3:

- Taxiway B (from north edge of Forestry to main apron) closed except for adjacent tenants with 15 minutes PNR

**Re-Opened Areas**

- NIL

**Operational Procedures During the Construction Period**

- NIL

**Instrument Procedures – Temporary Long-Term Changes (3 months or greater)**

- Refer to NOTAM

**Runway Physical Changes**

- NIL

**Other Hazards**

- Closed areas delineated by low-profile barricades with obstruction lights or red lights mounted on rubber bases (depictions below)





### Further Information

Canadian Rockies International Airport  
1 – 9370 Airport Access Rd,  
Cranbrook, BC  
V1C 7E4  
Attention: Jamie Roche, Manager Operations

Tel: 250-426-7913  
Email: [roche@cranbrook.ca](mailto:roche@cranbrook.ca)

Chris Bowden  
Director, Aeronautical Information Management and Flight Operations