

AIP CANADA SUPPLEMENT 36/23

AERODROME CONSTRUCTION – CYRC CHICOUTIMI/ST-HONORÉ AIRPORT

(Replaces AIP Canada Supplement 11/23)

Introduction

A construction project with an estimated duration of 8 weeks will begin for runway 12/30, intersection of runway thresholds 24 and 18, and taxiway C.

Validity

May 23, 2023 1100 UTC to July 13, 2023 2130 UTC




Use of NOTAM with this AIP Supplement

NOTAMs are used to manage short-term temporary changes to aeronautical information. AIP Supplements are used to manage long-term temporary changes to aeronautical information.

A current NOTAM supersedes any information contained within this AIP Supplement.

Changes to the AIP Supplement promulgated through NOTAM will be incorporated into this AIP Supplement and the NOTAM will be canceled.

Legend

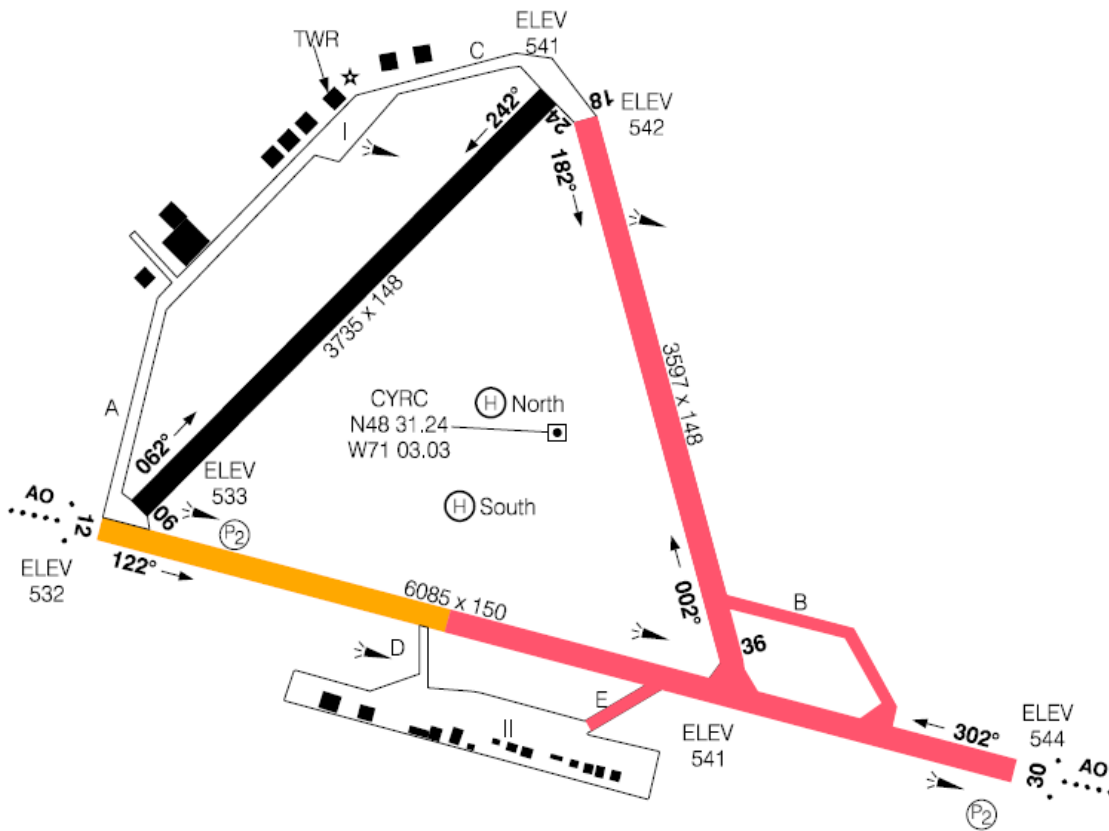
	Application/Symbol	Colour
Closed		Red
Runway Available for Taxi Only		Amber
Construction Activity Area		Grey

Phase 1

Construction Period

- May 23, 2023 1100 UTC to 1600 UTC

**Construction Area Depictions
Phase 1**



Closed Areas and Restrictions

- Runway 18/36 closed
- Runway 12/30 closed, available for taxi between runway 12 threshold and taxiway D
- Taxiways B and E closed

Re-Opened Areas

- NIL

Operational Procedures During the Construction Period

- NIL

Instrument Procedures – Temporary Long-Term Changes (3 months or greater)

- Refer to NOTAM

Runway Physical Changes

- NIL

Other Hazards

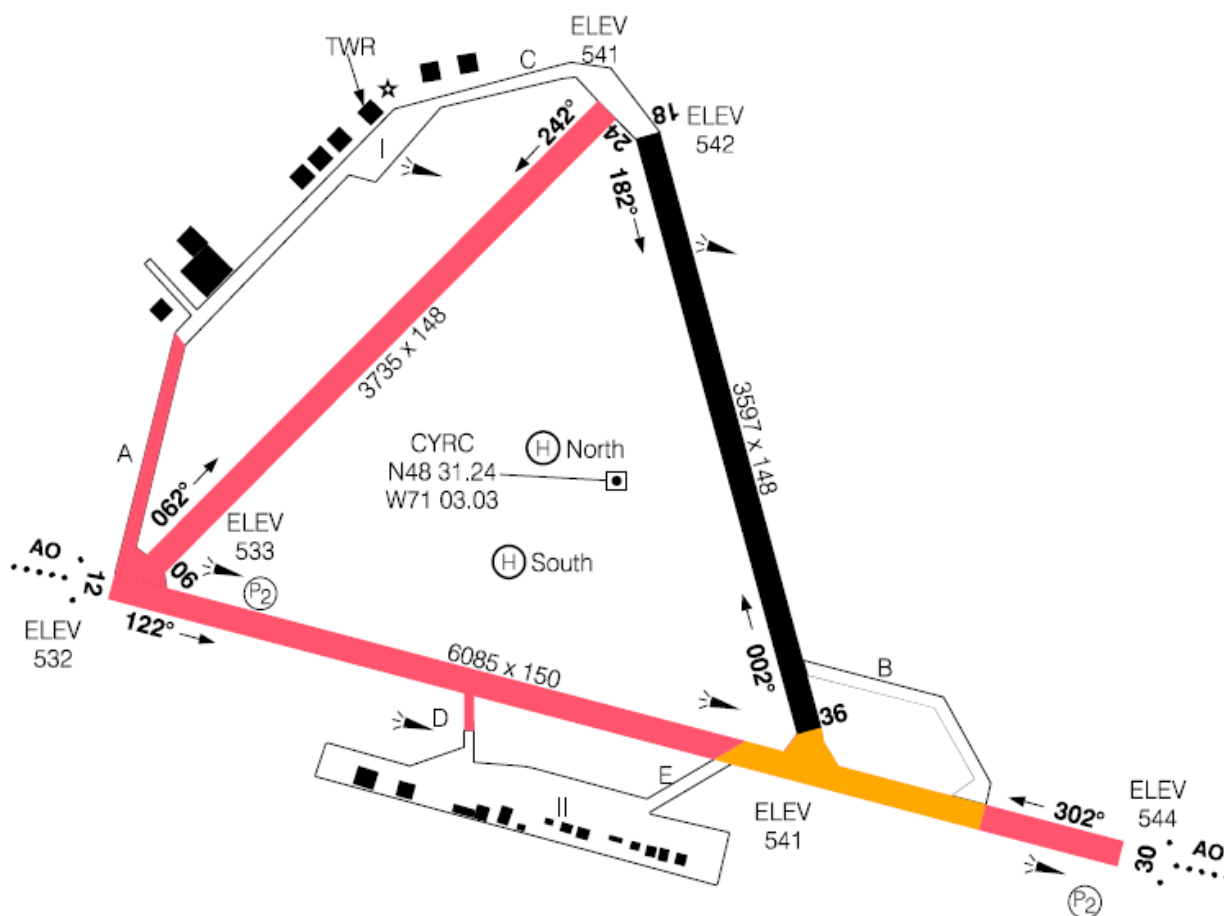
- Barricades in place delineating construction areas
- Runway 18/36 runway lighting disabled
- Runway 12/30 runway lighting disabled
- Taxiway B lighting disabled

Phase 2

Construction Period

- May 23, 2023 1600 UTC to 2130 UTC

Construction Area Depictions



Closed Areas and Restrictions

- Runway 06/24 closed.
- Runway 12/30 closed, available for taxi between Taxiways B and E
- Taxiway A partially closed and Taxiway D closed

Re-Opened Areas

- Runway 18/36
- Runway 12/30 for ground taxiing between Taxiways B and E
- Taxiways B and E

Operational Procedures During the Construction Period

- NIL

Instrument Procedures – Temporary Long-Term Changes (3 months or greater)

- Refer to NOTAM

Runway Physical Changes

- NIL

Other Hazards

- Barricades in place delineating construction areas
- Runway 12/30 lighting disabled
- Lighting disabled on Taxiway D and closed portion of Taxiway A

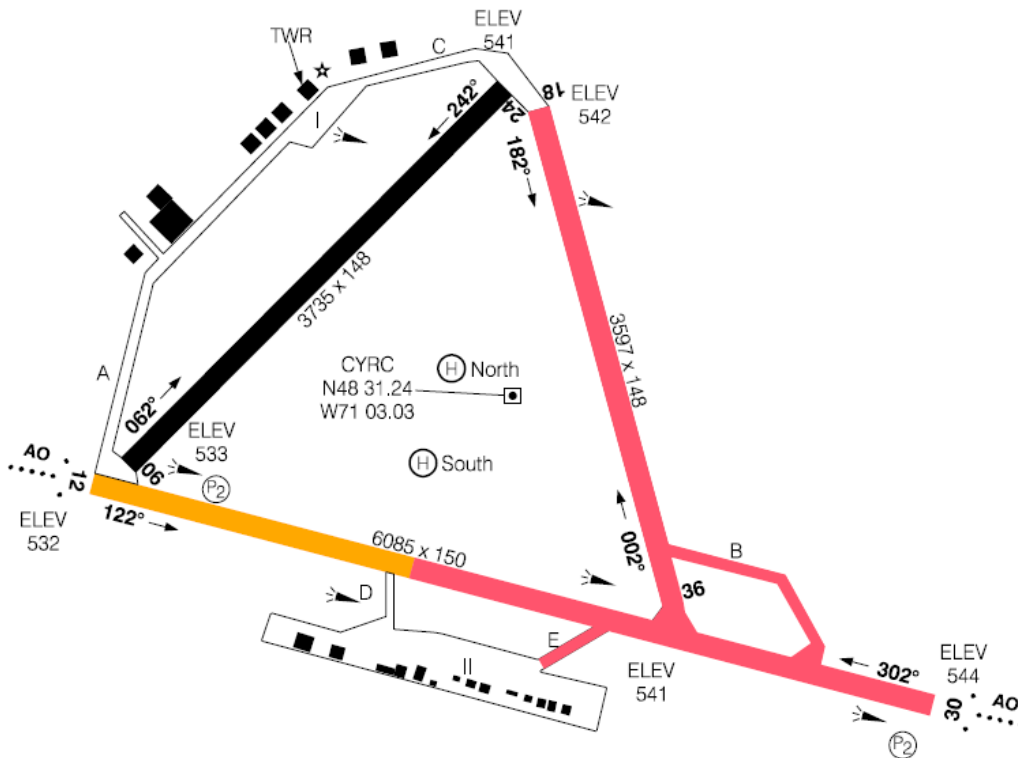
Phase 3

Construction Period

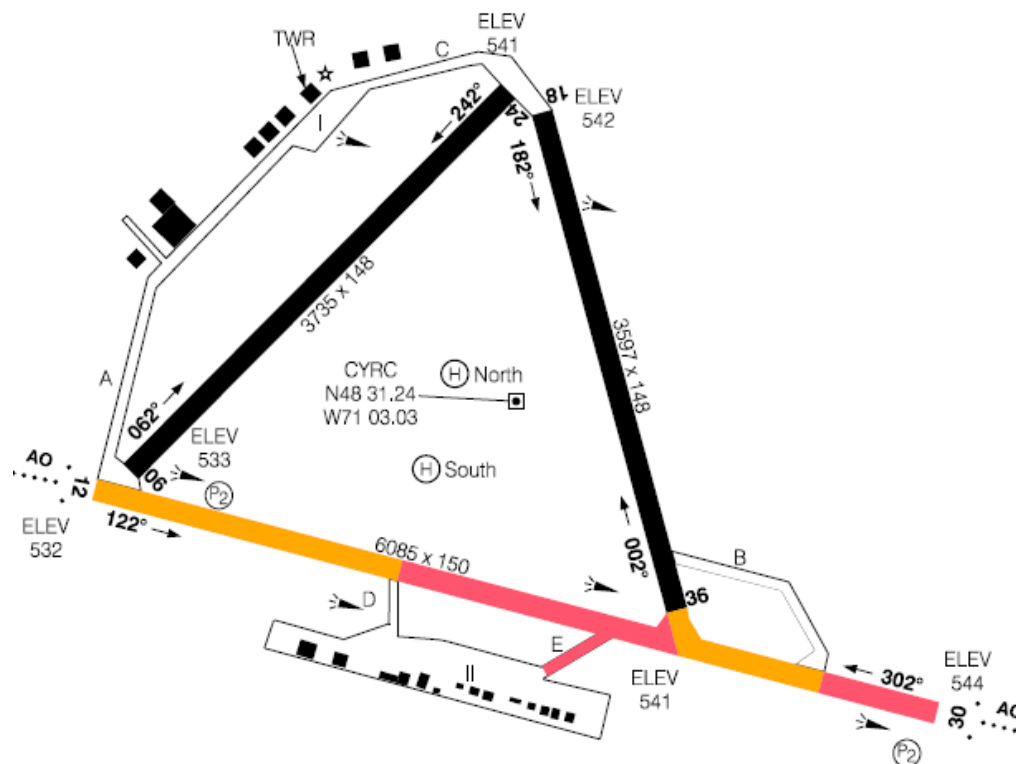
- **May 24, 2023 to May 29, 2023**
 - 1100 UTC to 2130 UTC
 - 2130 UTC to 1100 UTC

Construction Area Depictions

1100 UTC to 2130 UTC



2130 UTC to 1100 UTC

**Closed Areas and Restrictions****1100 UTC to 2130 UTC**

- Runway 18/36 closed
- Runway 12/30 closed, available for taxi between Runway 12 threshold and Taxiway D
 - Temporary taxiway lighting installed between Runway 12 threshold and Taxiway D
- Taxiways B and E closed

2130 UTC to 1100 UTC

- Runway 12/30 closed, available for taxi between Runway 12 threshold and Taxiway D and between the intersection of runway 36 and taxiway B
 - Temporary taxiway lighting installed between Runway 12 threshold and Taxiway D and between the intersection of Runway 36 and Taxiway D
- Taxiway E closed

Re-Opened Areas

- Runway 06/24
- Taxiways A and D

Operational Procedures During the Construction Period

- NIL

Instrument Procedures – Temporary Long-Term Changes (3 months or greater)

- Refer to NOTAM

Runway Physical Changes

- NIL

Other Hazards

- Barricades in place delineating construction areas
- Runway lighting disabled during closed periods
- Taxiway B lighting disabled 1100 UTC to 2130 UTC

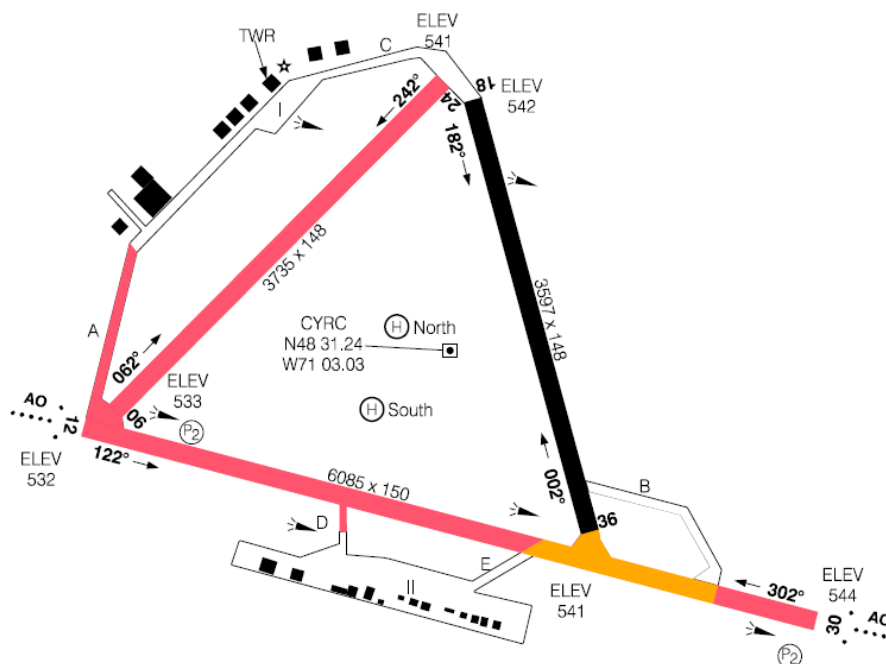
Phase 4

Construction Period

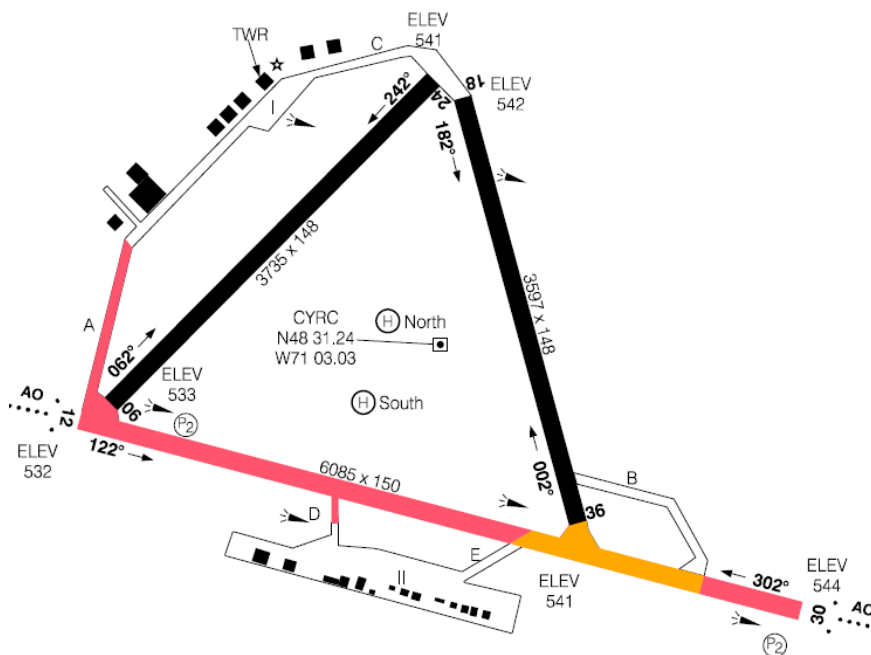
- May 30, 2023 to June 27, 2023 1100 UTC to 2130 UTC

Construction Area Depictions

Runway 06/24 closed



Runway 06/24 active



Closed Areas and Restrictions

Runway 06/24 Closed

- Runway 06/24 closed
- Runway 12/30 closed, available for taxi between Taxiways E and B
 - Temporary taxiway lighting installed between Taxiways E and B
- Taxiways A (partially) and D closed

Runway 06-24 Active

- Runway 12/30 closed, available for taxi between Taxiways E and B
 - Temporary taxiway lighting installed between Taxiways E and B
 - Taxiways A (partially) and D closed

Re-Opened Areas

- Runway 12/30 for ground taxiing purposes, between Taxiways E et B
- Taxiway E

Operational Procedures During the Construction Period

- NIL

Instrument Procedures – Temporary Long-Term Changes (3 months or greater)

- Refer to NOTAM

Runway Physical Changes

Declared Distances	06	24
TORA	3735	3735
TODA	3735	3735
ASDA	3735	3735
LDA	3735	3735

Other Hazards

- Barricades in place delineating closed areas
- Runway 12-30 lighting disabled
- Taxiway A and D lighting disabled

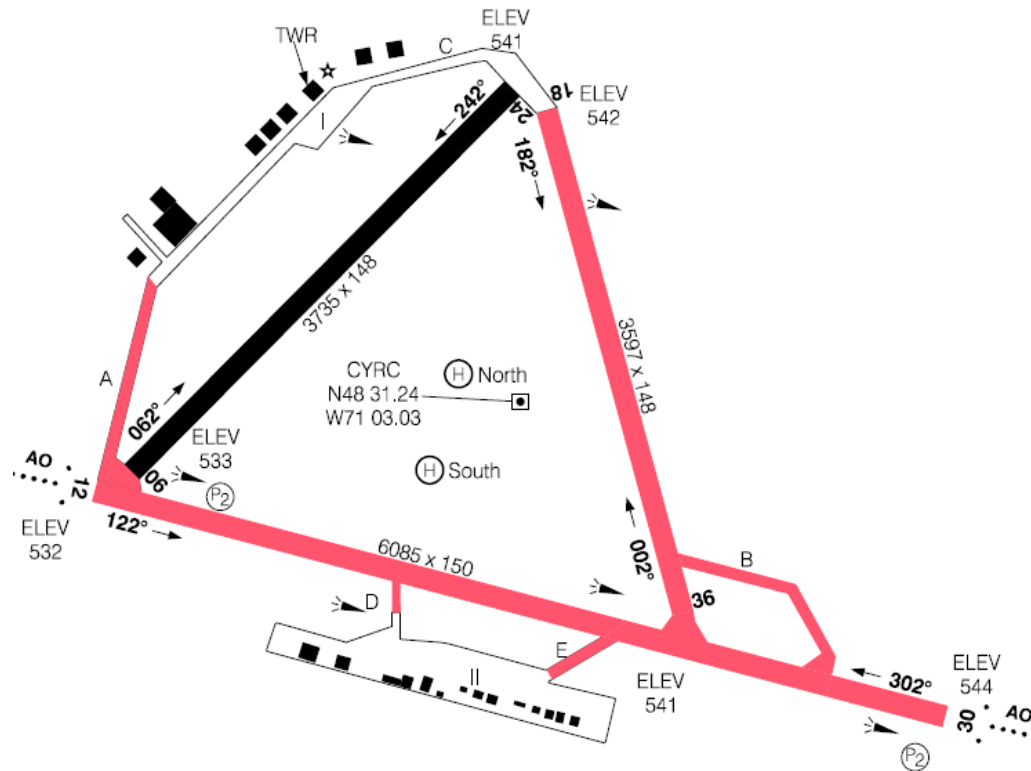
Phase 5

Construction Period

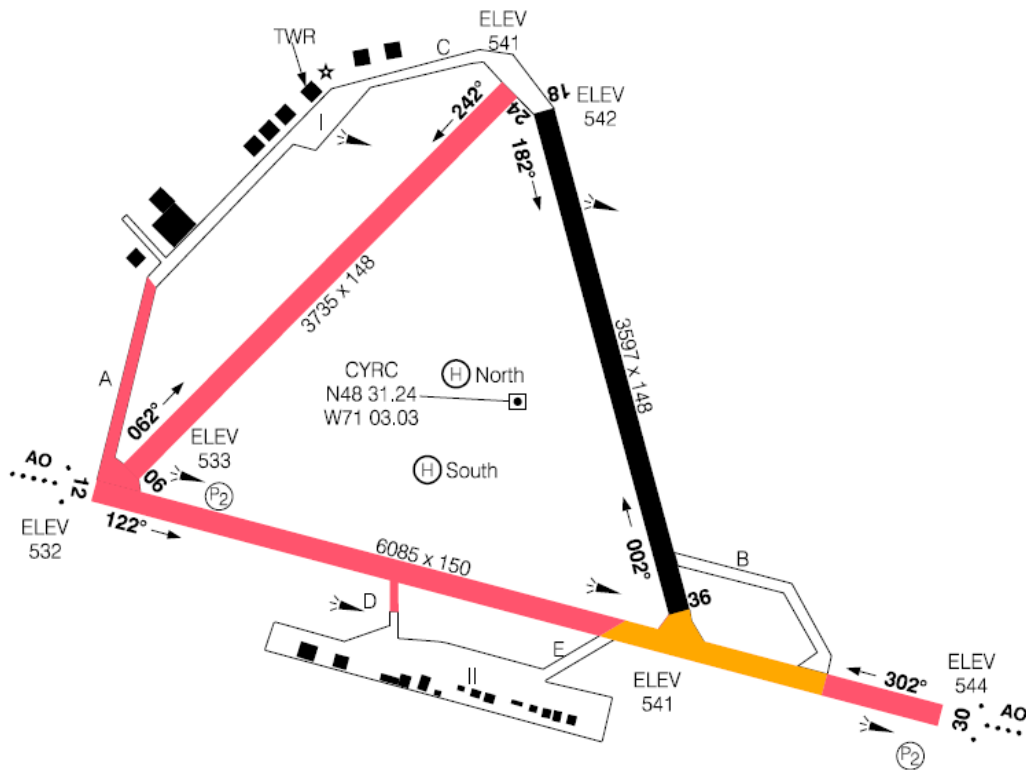
- June 28, 2023 to July 05, 2023
 - 1100 UTC to 1300 UTC
 - 1300 UTC to 1100 UTC

Construction Area Depictions

1100 UTC to 1300 UTC



1300 UTC to 1100 UTC



Closed Areas and Restrictions

1100 UTC to 1300 UTC

- Runway 18/36 closed
- Runway 12/30 closed
- Taxiways A (partially), B, D and E closed

1300 UTC to 1100 UTC

- Runway 12/30 closed, available for taxi between Taxiways E and B
 - Temporary lighting installed between Taxiways E and B
- Taxiways A (partially) and D closed

Re-Opened Areas

- NIL

Operational Procedures During the Construction Period

- NIL

Instrument Procedures – Temporary Long-Term Changes (3 months or greater)

- Refer to NOTAM

Runway Physical Changes

Declared Distances	06	24
TORA	3735	3735
TODA	3735	3735
ASDA	3735	3735
LDA	3735	3735

Other Hazards

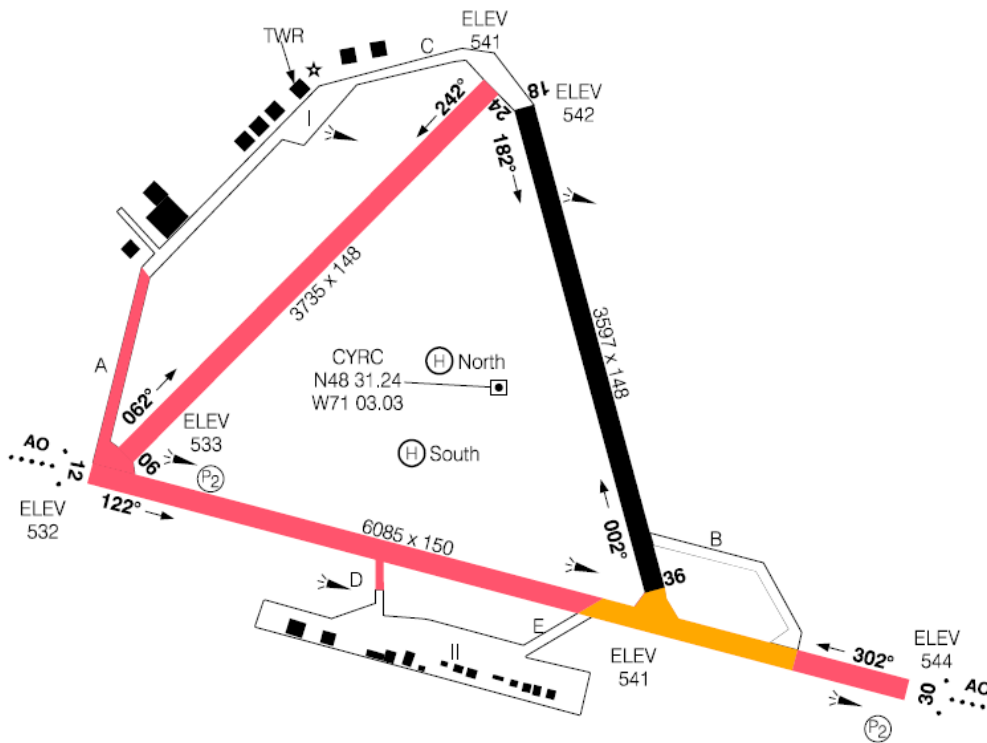
- Barricades in place delineating construction areas
- Runway 18/36 lighting disabled during closed periods
- Runway 12/30 lighting disabled
- Taxiway lighting A and D disabled
- Taxiway lighting B disabled during closed periods

Phase 6

Construction Period

- July 6, 2023 1100 UTC to 1600 UTC

Construction Area Depictions



Closed Areas and Restrictions

- Runway 06/24 closed
- Runway 12/30 closed, available for taxi between Taxiways E and B
 - Temporary lighting installed between taxiways E and B
- Taxiways A (partially) and D closed

Re-Opened Areas

- NIL

Operational Procedures During the Construction Period

- NIL

Instrument Procedures – Temporary Long-Term Changes (3 months or greater)

- Refer to NOTAM

Runway Physical Changes

- NIL

Other Hazards

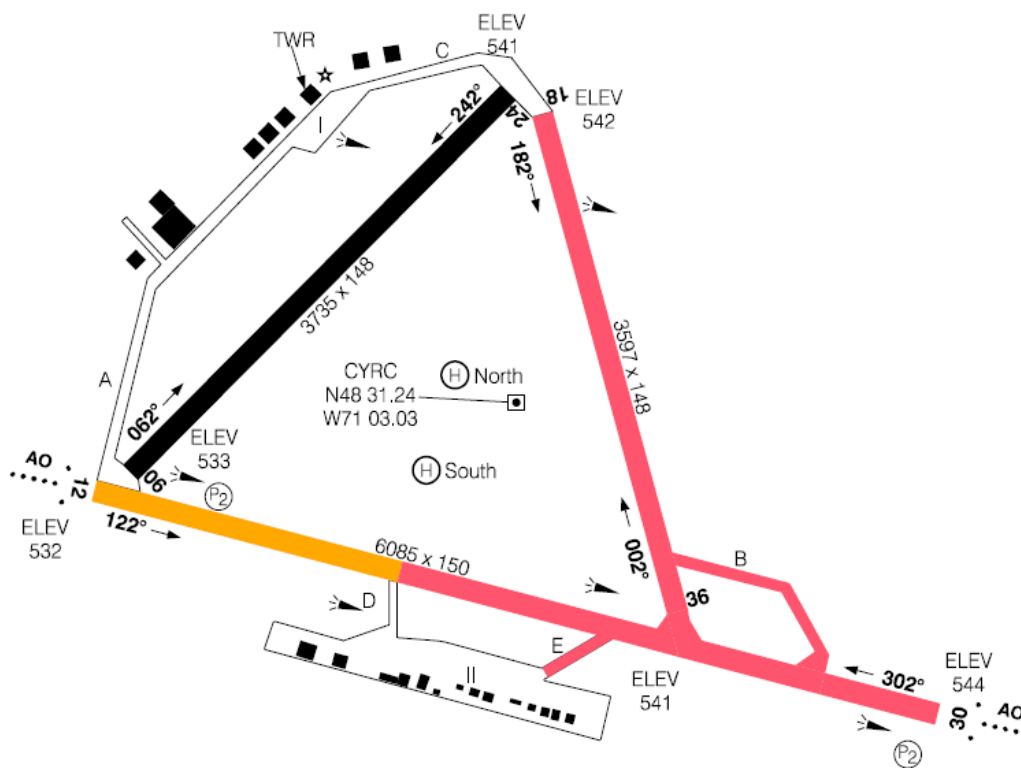
- Barricades in place delineating construction areas
- Runway 12/30 lighting disabled
- Taxiway lighting A and D disabled

Phase 7

Construction Period

- July 6, 2023 1600 UTC to 2130 UTC

Construction Area Depictions



Closed Areas and Restrictions

- Runway 18/36 closed
- Runway 12/30 closed, available for taxi between Runway 06 threshold and Taxiway D
 - Temporary taxiway lighting installed between Runway 06 threshold and Taxiway D
- Taxiways B and E closed

Re-Opened Areas

- Runway 06/24
- Runway 12/30 for ground taxiing purposes, between Runway 12 and Taxiway D
- Taxiways A and D

Operational Procedures During the Construction Period

- NIL

Instrument Procedures – Temporary Long-Term Changes (3 months or greater)

- Refer to NOTAM

Runway Physical Changes

- NIL

Other Hazards

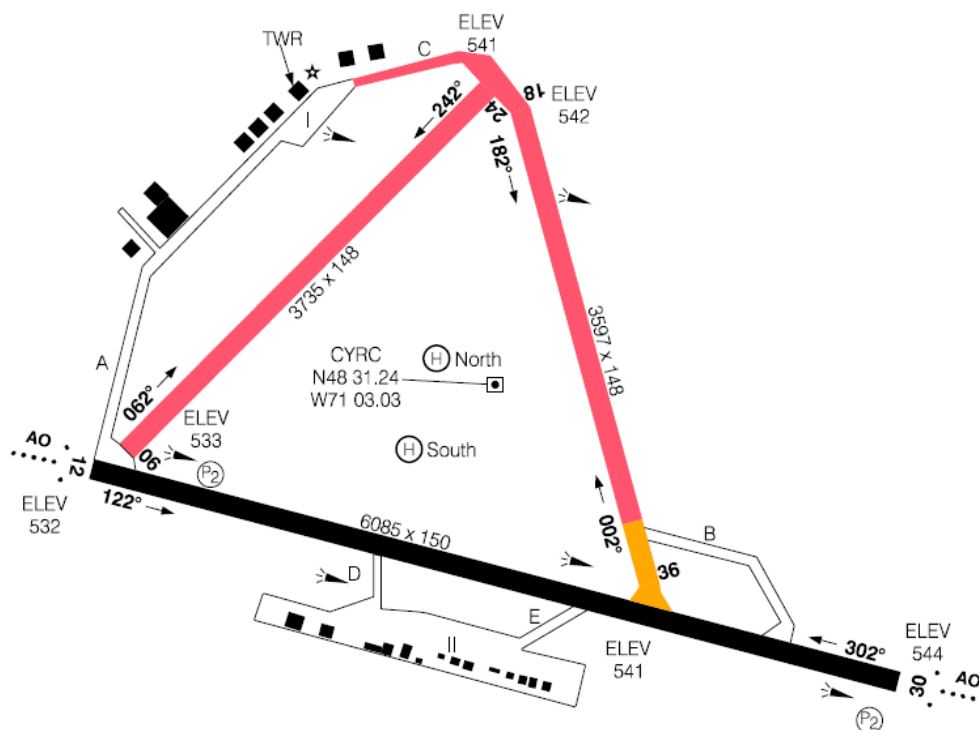
- Barricades in place delineating construction areas
- Runway 18/36 lighting disabled
- Runway 12/30 lighting disabled
- Taxiway lighting B disabled

Phase 8

Construction Period

- July 7, 2023 to July 12, 2023 1100 UTC to 2130 UTC

Construction Area Depictions



Closed Areas and Restrictions

- Runway 06/24 closed
- Runway 18/36 closed, available for taxi between Taxiways B and Runway 12/30 intersection
 - Temporary taxiway lighting installed between Taxiway B and Runway 12/30 intersection
- Taxiway C closed

Re-Opened Areas

- Runway 12/30
- Runway 18/36 surfaces being used as a taxiway between Taxiway B and Runway 12/30 intersection
- Taxiways B and E

Operational Procedures During the Construction Period

- NIL

Instrument Procedures – Temporary Long-Term Changes (3 months or greater)

- Refer to NOTAM

Runway Physical Changes

- NIL

Other Hazards

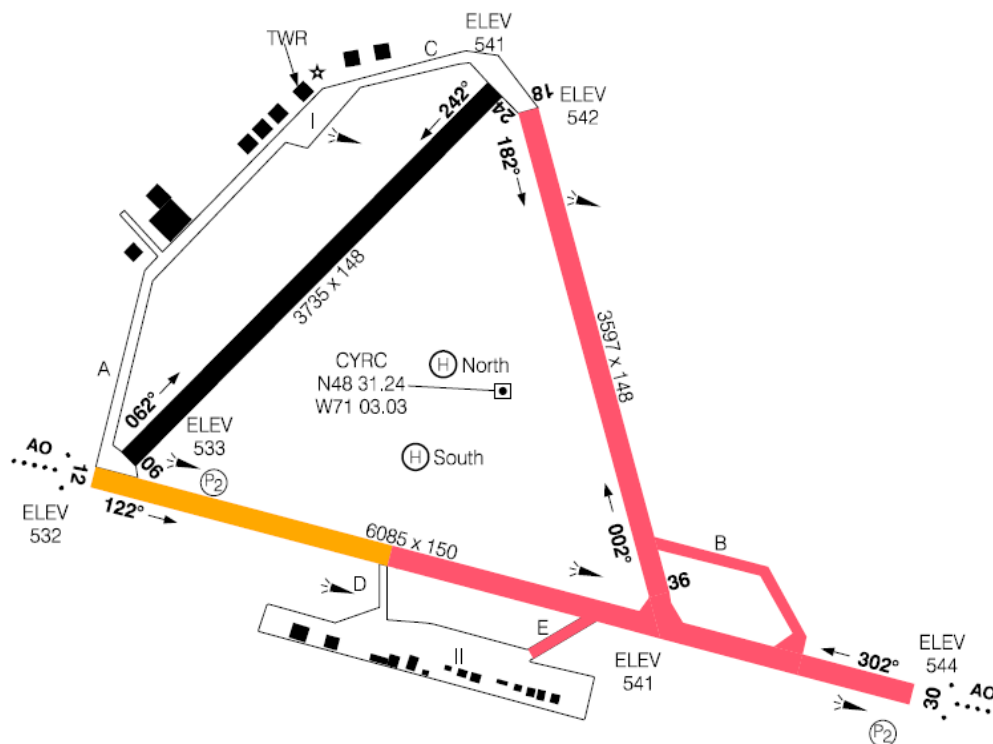
- Barricades in place delineating construction areas
- Runway 18/36 lighting disabled
- Taxiway C lighting disabled

Phase 9

Construction Period

- July 13, 2023 1100 UTC to 1600 UTC

Construction Area Depictions



Closed Areas and Restrictions

- Runway 18/36 closed
- Runway 12/30 closed, available for taxi between Runway 12 threshold and Taxiway D
- Taxiways B and E closed

Re-Opened Areas

- Runway 06/24
- Taxiway C

Operational Procedures During the Construction Period

- NIL

Instrument Procedures – Temporary Long-Term Changes (3 months or greater)

- Refer to NOTAM

Runway Physical Changes

- NIL

Other Hazards

- Barricades in place delineating construction areas
- Runway 18/36 lighting disabled
- Runway 12/30 lighting disabled
- Taxiway B lighting disabled

Further Information

Ministère des transports et de la mobilité Durable

Direction générale des projets et de l'exploitation aéroportuaires :

- Selim Ahmed regarding all technical questions and project scheduling:
Selim.Ahmed@transports.gouv.qc.ca
- Taoufik Sassi regarding any operational and flight safety questions related to this project:
Taoufik.Sassi@transports.gouv.qc.ca
- Yves Melançon for any general questions or comments:
Yves.Melancon@transports.gouv.qc.ca



Chris Bowden
Director, Aeronautical Information Management and Flight Operations