

AIP CANADA SUPPLEMENT 33/23

AERODROME CONSTRUCTION – CYWG WINNIPEG RICHARDSON INTERNATIONAL AIRPORT

Introduction

Construction activities will be taking place on the following airport surfaces during their applicable phases, as described below.

- Apron VII Expansion
- North Apron I Rehabilitation
- Taxiway C Rehabilitation
- Taxiway H Realignment
- Runway 18 Approach Lighting Installation (SSALR)
- Runway 36 RESA Construction

All activities are subject to operational requirements and construction schedules. Actual dates and times of construction activities will be promulgated through briefing documents and NOTAM.

Validity

The airfield construction projects will be taking place between April 2023 and November 2023.




Use of NOTAM with this AIP Supplement

NOTAMs are used to manage short-term temporary changes to aeronautical information. AIP Supplements are used to manage long-term temporary changes to aeronautical information.

A current NOTAM supersedes any information contained within this AIP Supplement.

Changes to the AIP Supplement promulgated through NOTAM will be incorporated into this AIP Supplement and the NOTAM will be canceled.

Legend

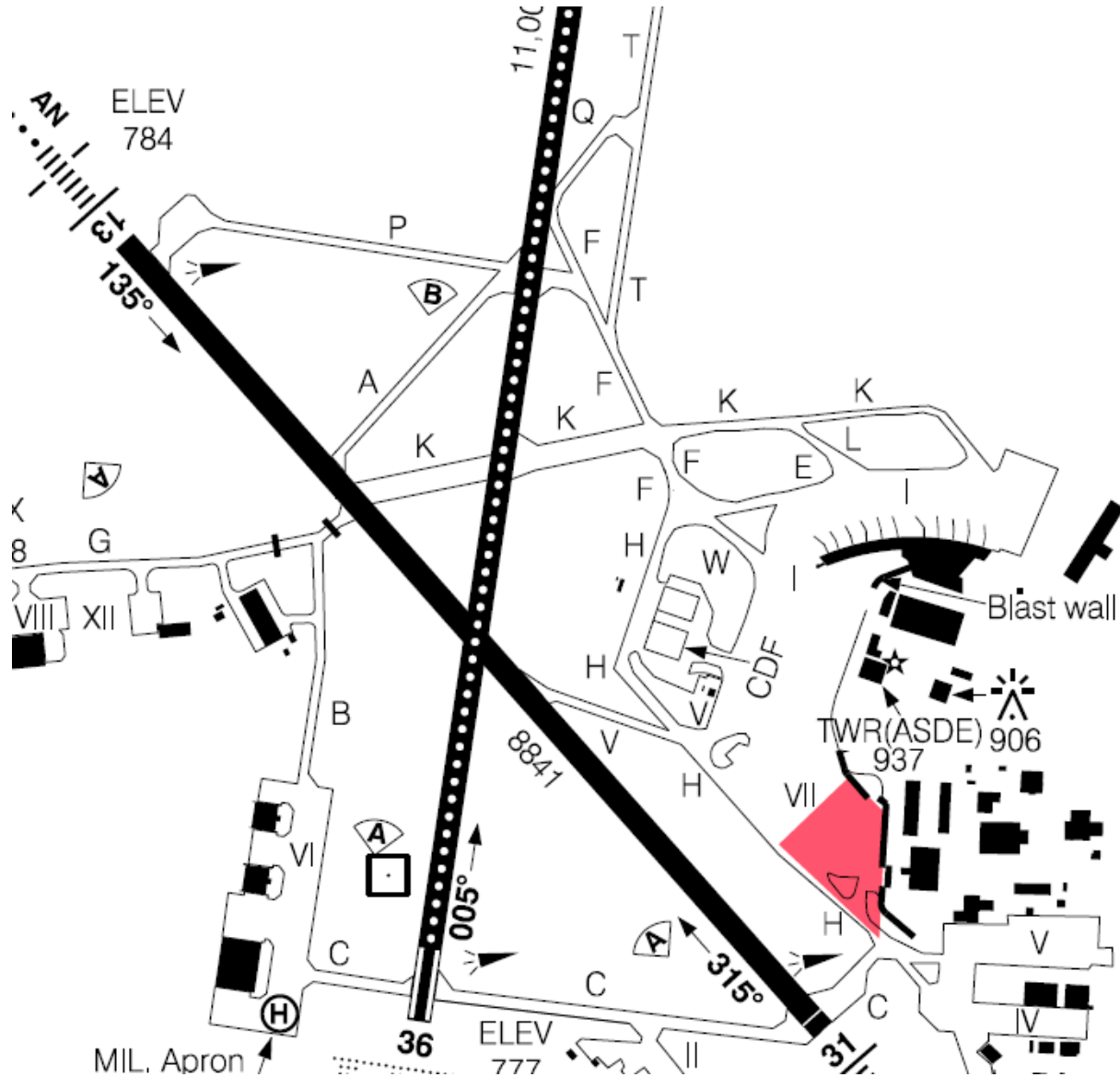
	Application/Symbol	Colour
Closed		Red
Runway Available for Taxi Only		Amber
Construction Activity Area		Grey

Phase 1

Construction Period

- April 17, 2023 0600 UTC – July 30, 2023 1800 UTC

Construction Area Depictions



Closed Areas and Restrictions

- Apron VII Entrance at Taxiway H Closed.
- Taxiway H closed periodically by NOTAM.

Re-Opened Areas

- NIL

Operational Procedures During the Construction PeriodFor Departing Aircraft

- Contact Ground prior to taxi for routing.
- Access to Taxiway H directly from Operational Stands 71-74

For Arriving Aircraft

- Access to Apron VII via Taxiway V or Apron I.
- Access to Apron VII Operational Stands 71-74 directly from Taxiway H.

Instrument Procedures – Temporary Long-Term Changes (3 months or greater)

- Refer to NOTAM.

Runway Physical Changes

- NIL

Other Hazards

- Low level illuminated barriers will be installed to delineate work area.

Closed Areas and Restrictions

- Various Operational Stands to be closed moving east to west.
- Taxiway K (between Taxiway L and Apron I), Taxiway L and Taxiway E closed periodically as construction activity moves along apron taxilane.

Re-Opened Areas

- Apron and Taxiway's opened as Operational Stands become available.

Operational Procedures During the Construction PeriodFor Departing Aircraft

- Contact Ground prior to taxi for routing.
- Ground will provide routing per closures.

For Landing Aircraft

- Contact Ground upon landing for routing to Operational Stand.

Instrument Procedures – Temporary Long-Term Changes (3 months or greater)

- Refer to NOTAM.

Runway Physical Changes

- NIL

Other Hazards

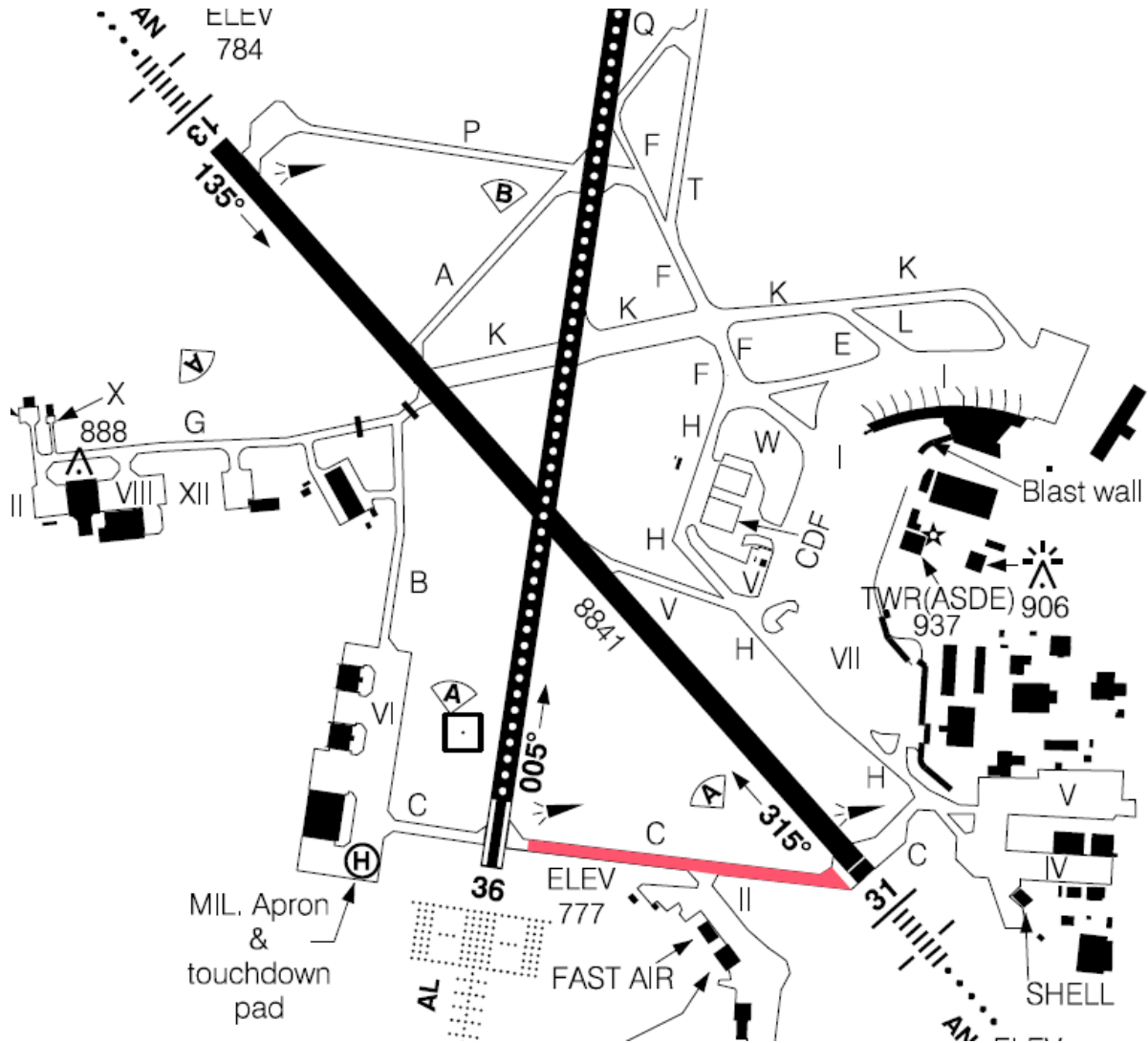
- Low level illuminated barriers will be installed to delineate work area.
- Possible FOD generation from construction activity.

Phase 3

Construction Period

- June 8, 2023 0600 UTC – July 7, 2023 1800 UTC

Construction Area Depictions



Closed Areas and Restrictions

- Taxiway C will be closed east of Apron II to Runway 13/31 for approx. 10 days.
 - Runway 13/31 will be downgraded to non-instrument for 2 days.
 - Runway 13/31 will be closed for 2 days to allow Taxiway and Runway Intersection work.
- Taxiway C will be closed west of Apron II to Runway 18/36 for approx. 8 days.
 - Runway 18/36 will be downgraded to non-instrument for 2 days.

Re-Opened Areas

- Taxiway opened as work transitions between east and west.
- Apron II remains accessible.

Operational Procedures During the Construction PeriodFor Departing Aircraft

- Contact Ground prior to taxi for routing.
- Ground will provide routing per closures.

For Landing Aircraft

- Contact Ground upon landing for routing to Operational Stand.
- Backtrack on 18/36 will be required during Taxiway C closure.

Instrument Procedures – Temporary Long-Term Changes (3 months or greater)

- Refer to NOTAM.

Runway Physical Changes

- NIL

Other Hazards

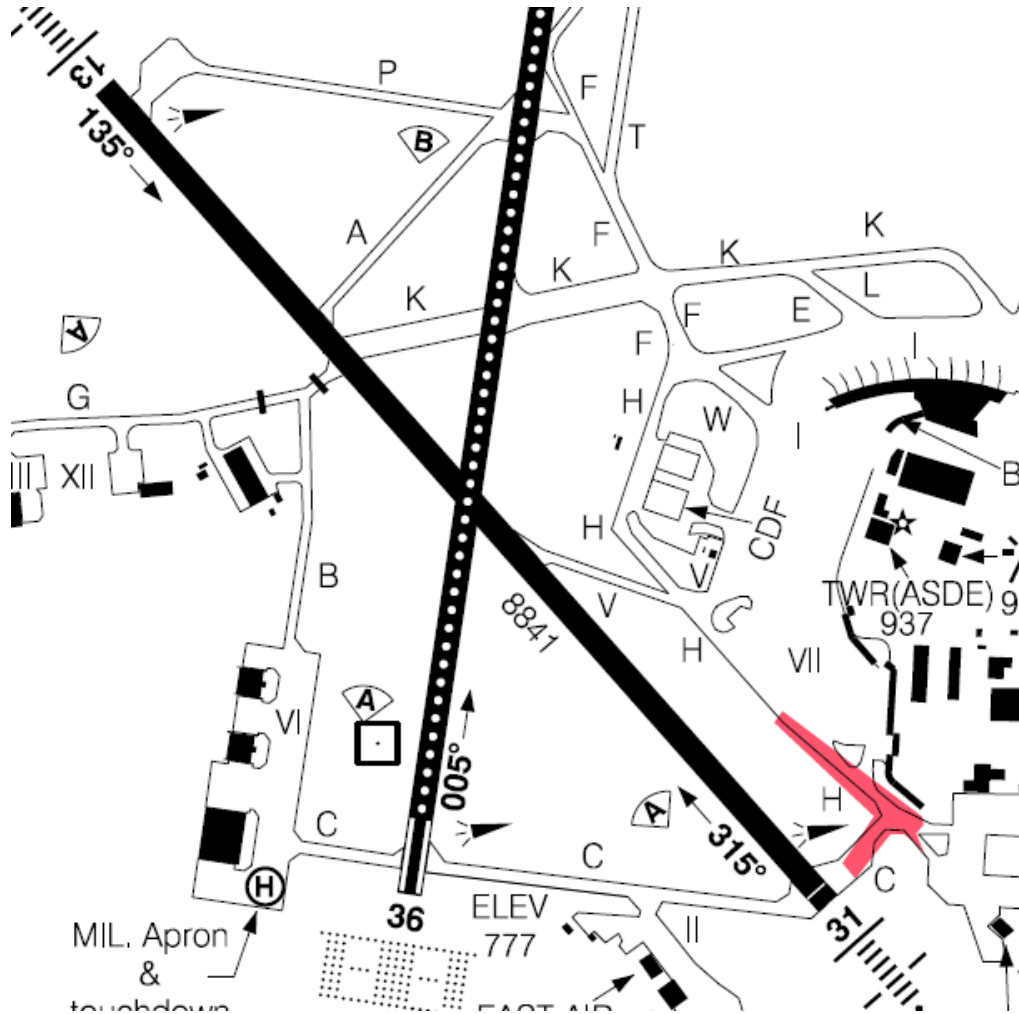
- Low level illuminated barriers will be installed to delineate work area.
- Possible FOD generation from construction activity.

Phase 4

Construction Period

- May 22, 2023 0600 UTC – October 7, 2023 1800 UTC

Construction Area Depictions



Closed Areas and Restrictions

- Taxiway H Closed from Apron VII Stand 75 to Apron VII Entrance for approx. 35 days.
- Taxiway C will be closed between Runway 13/31 to Taxiway H for approx. 10 days.
 - Runway 13/31 will be downgraded to non-instrument for 2 days.
 - Runway 13/31 will be closed for 2 days to allow Taxiway and Runway Intersection work.
- Access to Apron IV and Apron V from Taxiway H will be closed and/or limited to maximum AGN IIIB periodically during final stages of work.
- Access to operating Apron will be via Stand 59. Stand 59 will not be available for parking during closure.

Re-Opened Areas

- Apron VII entrance will be available for taxi from Taxiway H to Apron VI during majority of construction.

Operational Procedures During the Construction PeriodFor Departing Aircraft

- Contact Ground prior to taxi for routing.
- Ground will provide routing per closures.

For Landing Aircraft

- Contact Ground upon landing for routing to Operational Stand.
- Access to Taxiway C east of 13/31 will be per construction schedule.

Instrument Procedures – Temporary Long-Term Changes (3 months or greater)

- Refer to NOTAM.

Runway Physical Changes

- NIL

Other Hazards

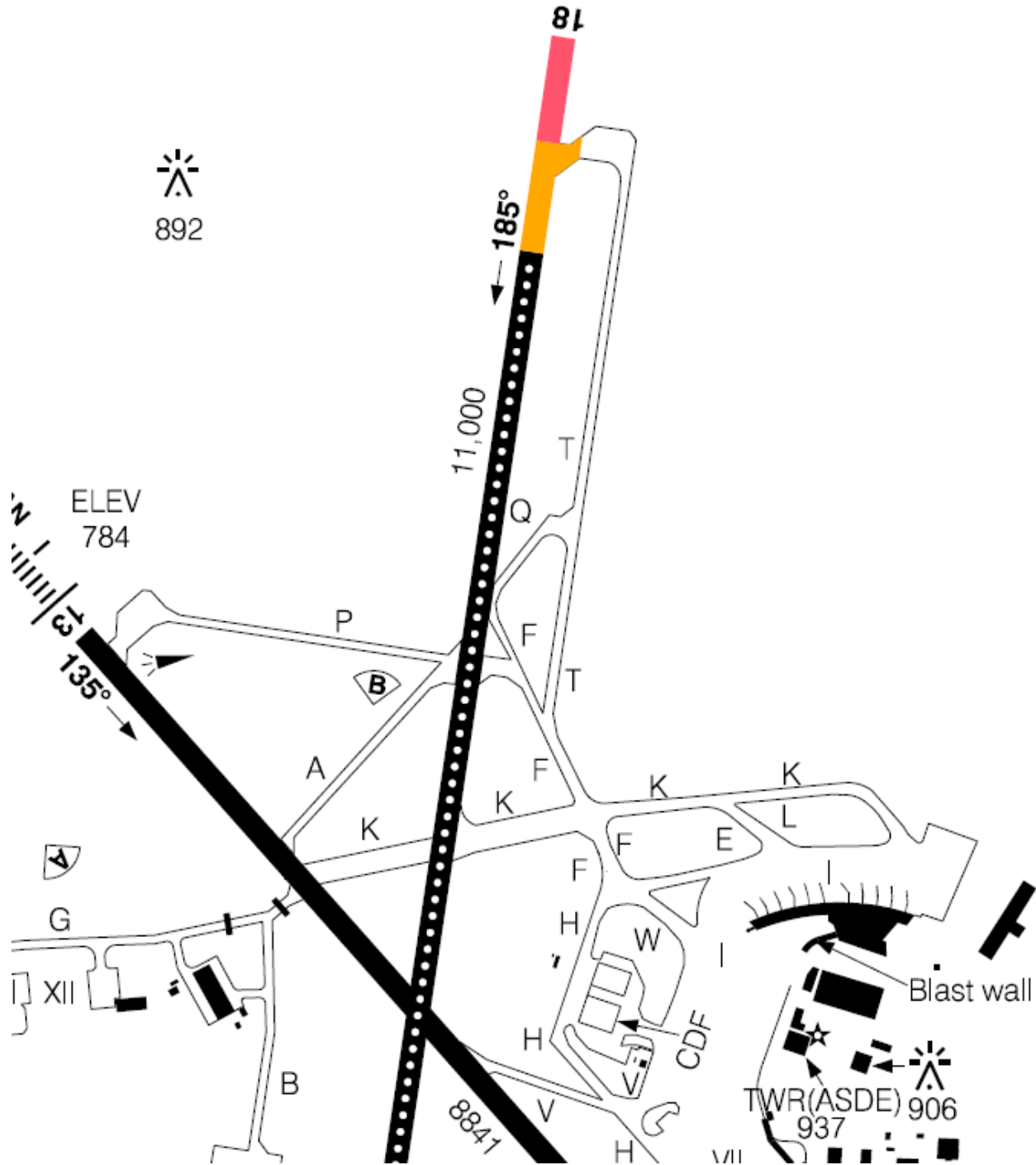
- Low level illuminated barriers will be installed to delineate work area.
- Possible FOD generation from construction activity.

Phase 5

Construction Period

- July 8, 2023 0600 UTC – October 27, 2023 1800 UTC

Construction Area Depictions



Closed Areas and Restrictions

- Runway 18 will be temporarily closed by NOTAM to allow construction marking, lighting and navaid installation.

Re-Opened Areas

- NIL

Operational Procedures During the Construction PeriodFor Departing Aircraft

- Contact Ground prior to taxi for routing and takeoff clearance.
- Ground will provide routing per operations.
- Runway 18 displaced threshold by 1000 feet.
- Aircraft not to apply take-off thrust until reaching the displaced threshold.
- Declared distances listed below.

For Landing Aircraft

- Runway 18 displaced threshold by 1000 feet.
- Runway 36 TORA/TODA reduced by 1000 feet.
- Contact Ground upon landing for routing to Operational Stand.
- Declared distances listed below.

Instrument Procedures – Temporary Long-Term Changes (3 months or greater)

- Refer to NOTAM.

Runway Physical Changes

Declared Distances	13	31	18	36
TORA	8841	8841	9997	9997
TODA	9825	9825	10981	9997
ASDA	8841	8841	9997	9997
LDA	8841	8701	9997	9997

Other Hazards

- Low level illuminated barriers will be installed to delineate work area.
- Possible FOD generation from construction activity.

Further Information

Manager, Airport Operations
(204) 298-2430

NAV CANADA
Customer Service
151 Slater Street, Suite 120
Ottawa, ON K1P 5H3

Tel.: 800-876-4693
Fax: 877-663-6656
E-mail: service@navcanada.ca



Chris Bowden
Director, Aeronautical Information Management and Flight Operations