

# AIP CANADA SUPPLEMENT 68/22

## CONSTRUCTION AT KELOWNA INTERNATIONAL AIRPORT (CYLW) JUNE 2022 TO MARCH 2023

(Replaces AIP Canada Supplement 50/22)

From June 2022 to March 2023, airfield construction work will be taking place on Runway 16/34 at the Kelowna International Airport (CYLW). The project has two stages. Work will start with Stage 2 (Work on Runway 34 End – South side) then move on to Stage 1 (Work on Runway 16 End – North side):

- 1. Stage 1: Work on Runway 16 – North side**
  - Area A – Runway End Safety Area (RESA) construction
  - Area B – Taxiway Golf construction
  - Area C – Turn Pad expansion
  - Area D – Turn Pad expansion (*Zone Impacting Airport Operations*)
- 2. Stage 2: Work on Runway 34 – South side**
  - Area A – RESA construction, runway extension and blast pad construction
  - Area B – Taxiway stub construction
  - Area C – West perimeter access road construction
  - Area D – Old turn pad removal

A winter construction break from December 2022 to February 2023 is anticipated.

Construction working times will generally be Monday to Saturday with potential work on Sundays, 1400Z to 0200Z, unless otherwise indicated.

**Stage 2: Area A – Runway End Safety Area Construction – Runway 16 End (June 2022 – October 2022)**

- Runway 34 threshold displaced by 450 feet (137.16 metres).
- First 849 feet (258.71 metres) of Runway 34 closed.
- Backtrack not authorized south of Taxiway Delta.
- Runway 34 medium intensity approach lighting system with sequenced flashing lights (MALSF) unserviceable.
- Runway 34 precision approach path indicator (PAPI) relocated.
- Taxiway D closed from south of Taxiway E to Runway 34 end during Stage 2, Area C only.
- Localizer (LOC) removed from service during certain parts of this stage.
- Modified declared runway distances (all distances in feet):

Runway	16	34
Displaced	No Change	450
TORA	8,049	8,050
TODA	8,049	8,401
ASDA	8,049	8,050
LDA	6,850	8,050



**Figure 1: Stage 2 Construction Limit and Runway Availability**

## Procedure Impact Summary for Stage 2:

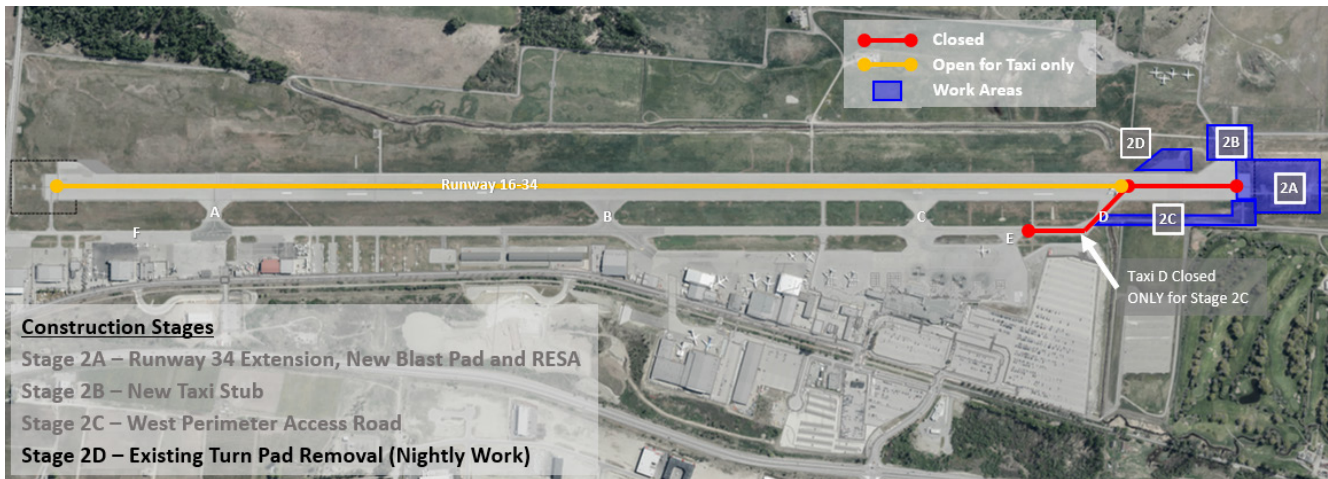
Procedure Name	Available/NOT AUTH
ILS Z RWY 16	NOT AUTHORIZED
ILS Y RWY 16	NOT AUTHORIZED
RNAV (RNP) Z RWY 34	NOT AUTHORIZED
LOC Z RWY 16	NOT AUTHORIZED
LOC Y RWY 16	NOT AUTHORIZED
RNAV (GNSS) Z RWY 16	AVAILABLE
RNAV (GNSS) Y RWY 16	AVAILABLE
RNAV (RNP) X RWY 16	AVAILABLE
RNAV (GNSS) V RWY 16	AVAILABLE
RNAV (GNSS) A (RWY 34 Circling Approach)	AVAILABLE
NDB B	AVAILABLE

Departure Procedure Name	Runway 16/34
KELOWNA EIGHT DEP	AVAILABLE
MERYT TWO DEP	AVAILABLE
NOTIV THREE DEP	AVAILABLE
PRINCETON TWO DEP	AVAILABLE
DEPARTURE PROCEDURE (Westbank/Wingfield Routes)	AVAILABLE

**Stage 2: Work Area 2D – Runway 34 Existing Turn Pad Removal (Estimated 5 nights in September 2022)**

- Runway 16/34 closed nightly between 0230Z to 1930Z except for scheduled passenger aircraft and emergency or MEDEVAC operations. When in use, refer to Stage 2 Operational Impact for details.
- Runway 16/34 available for taxiing only during the closure.
- Modified declared runway distances (all distances in feet):

Runway	16	34
Displaced	Runway CLOSED and available for taxiing only	
TORA		
TODA		
ASDA		
LDA		



**Figure 2: Stage 2 Construction Limit and Runway Availability for Stage 2D ONLY**

### Stage 1: Runway End Safety Area Construction – Runway 34 End (October 2022 – March 2023)

- First 1,025 feet (312.48 metres) of Runway 16 closed.
- Backtrack is not authorized north of Taxiway Alpha.
- Runway 16 MALSF unserviceable during construction working hours (approximately 1400Z to 0200Z). MALSF will be available during non-working times.
- Glide path out of service when workers are in Area 1D or when workers are not able to respect the minimum safe distances and equipment height restrictions in Area 1A, Area 1B and Area 1C.
- Modified declared runway distances (all distances in feet):

Runway	16	34
Displaced	No Change	No Change
TORA	8,014	8,014
TODA	8,295	8,014
ASDA	8,014	8,014
LDA	7,838	7,475

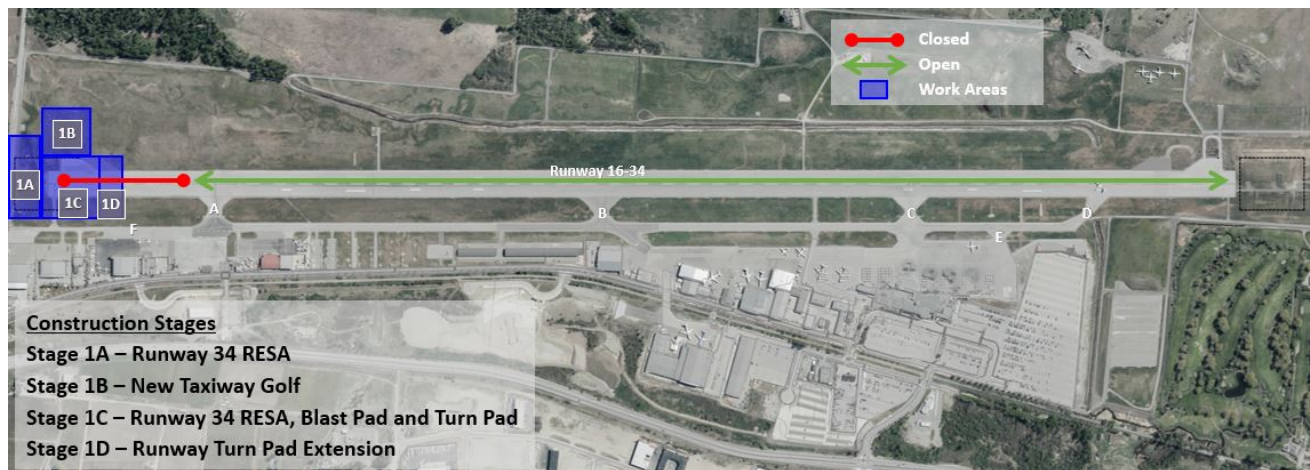


Figure 3: Stage 1 Construction Limit and Runway Availability

## Procedure Impact Summary for Stage 1:

Procedure Name	Available/NOT AUTH
ILS Z RWY 16	<b>NOT AUTHORIZED</b> <ul style="list-style-type: none"> <li>When workers are in Area 1D or when workers are not able to respect the minimum safe distances and equipment height restrictions in Area 1A, Area 1B and Area 1C</li> </ul>
ILS Y RWY 16	<b>NOT AUTHORIZED</b> <ul style="list-style-type: none"> <li>When workers are in Area 1D or when workers are not able to respect the minimum safe distances and equipment height restrictions in Area 1A, Area 1B and Area 1C</li> </ul>
RNAV (GNSS) Z RWY 16	<b>NOT AUTHORIZED</b> <ul style="list-style-type: none"> <li>When workers are in Area 1D or when workers are not able to respect the minimum distances and equipment height restrictions in Area 1A, Area 1B and Area 1C</li> </ul>
RNAV (RNP) X RWY 16	<b>NOT AUTHORIZED</b> <ul style="list-style-type: none"> <li>When workers are in Area 1D or when workers are not able to respect the minimum safe distances and equipment height restrictions in Area 1A, Area 1B and Area 1C</li> </ul>
RNAV (GNSS) V RWY 16	<b>NOT AUTHORIZED</b> <ul style="list-style-type: none"> <li>When workers are in Area 1D or when workers are not able to respect the minimum safe distances and equipment height restrictions in Area 1A, Area 1B and Area 1C</li> </ul>
LOC Z RWY 16	AVAILABLE
LOC Y RWY 16	AVAILABLE
RNAV (RNP) Z RWY 34	AVAILABLE
RNAV (GNSS) Y RWY 16	AVAILABLE
RNAV (GNSS) A (RWY 34 Circling Approach)	AVAILABLE
RNAV (GNSS) V RWY 16	LNAV ONLY AVAILABLE
NDB B	AVAILABLE

Departure Procedure Name	Runway 16/34
KELOWNA EIGHT DEP	AVAILABLE
MERYT TWO DEP	AVAILABLE
NOTIV THREE DEP	AVAILABLE
PRINCETON TWO DEP	AVAILABLE
DEPARTURE PROCEDURE (Westbank/Wingfield Routes)	AVAILABLE

For further information, please contact:

Kelowna International Airport  
5533 Airport Way 1  
Kelowna, BC V1V 1S1  
Attn: James Hall, Airport Operations Manager

Tel.: 250-807-4305  
E-mail: [jhall@kelowna.ca](mailto:jhall@kelowna.ca)



Chris Bowden  
Director, Aeronautical Information Management and Flight Operations