

AIP CANADA SUPPLEMENT 50/22

CONSTRUCTION AT KELOWNA INTERNATIONAL AIRPORT (CYLW) JUNE 2022 TO OCTOBER 2022

(Replaces AIP Canada Supplement 41/22)

From June 2022 to October 2022, airfield construction work will be taking place on Runway 16/34 at the Kelowna International Airport (CYLW). The project has two stages. Work will start with Stage 2 (Work on Runway 34 End – South side) then move on to the Stage 1 (Work on Runway 16 End – North side):

- 1. Stage 1: Work on Runway 16 End – North side**
 - Area A – Runway End Safety Area (RESA) construction
 - Area B – Taxiway Golf construction
 - Area C – Turn Pad expansion
- 2. Stage 2: Work on Runway 34 End – South side**
 - Area A – RESA construction, runway extension and blast pad construction
 - Area B – Taxiway stub construction
 - Area C – West perimeter access road construction
 - Area D – Old turn pad removal

Construction working times will generally be Monday to Saturday, 1400Z to 0200Z unless otherwise indicated.

Stage 2: Area A – Runway End Safety Area Construction – Runway 34 End (June 2022 – August 2022)

- Runway 34 threshold displaced by 450 feet (137.16 metres).
- First 849 feet (258.71 metres) of Runway 34 closed.
- Backtrack not authorized south of Taxiway Delta.
- Runway 34 medium intensity approach lighting system with sequenced flashing lights (MALSF) unserviceable.
- Runway 34 precision approach path indicator (PAPI) relocated.
- Taxiway D closed from south of Taxiway E to Runway 34 end during Stage 2, Area C only.
- Localizer (LOC) removed from service during certain parts of this stage.
- Modified declared runway distances (all distances in feet):

Runway	16	34
Displaced	No Change	450
TORA	8,049	8,050
TODA	8,049	8,401
ASDA	8,049	8,050
LDA	6,850	8,050

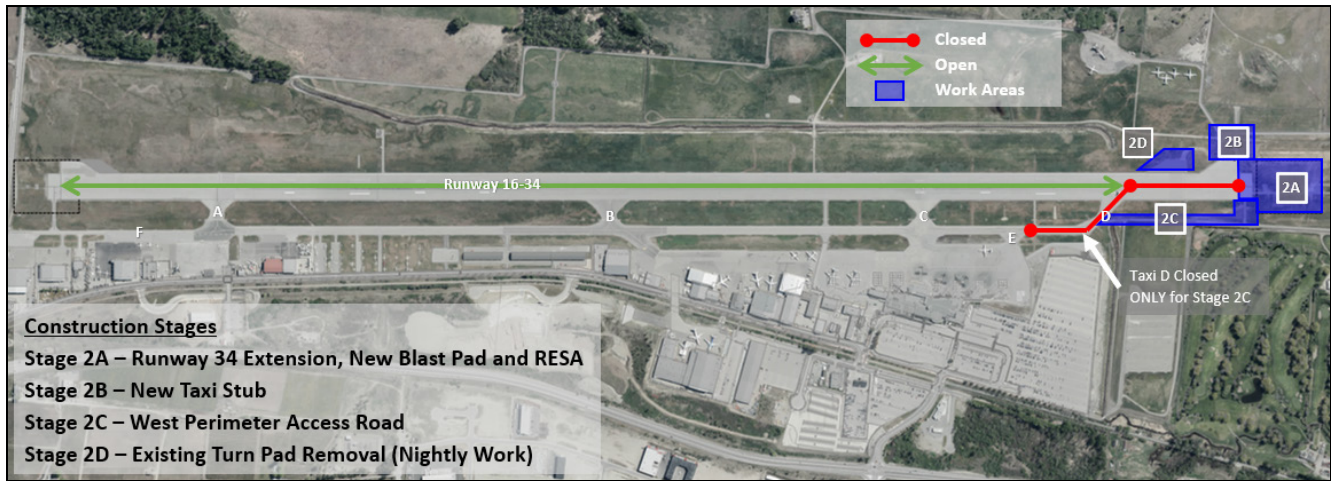


Figure 1: Stage 2 Construction Limit and Runway Availability

Procedure Impact Summary for Stage 2:

Procedure Name	Available/NOT AUTH
ILS Z RWY 16	NOT AUTHORIZED
ILS Y RWY 16	NOT AUTHORIZED
RNAV (RNP) Z RWY 34	NOT AUTHORIZED
LOC Z RWY 16*	NOT AUTHORIZED
LOC Y RWY 16*	NOT AUTHORIZED
RNAV (GNSS) Z RWY 16	AVAILABLE
RNAV (GNSS) Y RWY 16	AVAILABLE
RNAV (RNP) X RWY 16	AVAILABLE
RNAV (GNSS) V RWY 16	AVAILABLE
RNAV (GNSS) A (RWY 34 Circling Approach)	AVAILABLE
NDB B	AVAILABLE

Departure Procedure	Runway 16/34
KELOWNA EIGHT DEP	AVAILABLE
MERYT TWO DEP	AVAILABLE
NOTIV THREE DEP	AVAILABLE
PRINCETON TWO DEP	AVAILABLE
DEPARTURE PROCEDURE (Westbank/Wingfield Routes)	AVAILABLE

Stage 2: Work Area 2D – Runway 34 Existing Turn Pad Removal (Estimated 3 nights in August 2022)

- Runway 16/34 closed nightly between 0230Z to 1930Z except for scheduled passenger aircraft and emergency or MEDEVAC operations. When in use, refer to Stage 2 Operational Impact for details.
- Runway 16/34 available for taxiing only during the closure.
- Modified declared runway distances (all distances in feet):

Runway	16	34
Displaced	Runway CLOSED and available for taxiing only	
TORA		
TODA		
ASDA		
LDA		

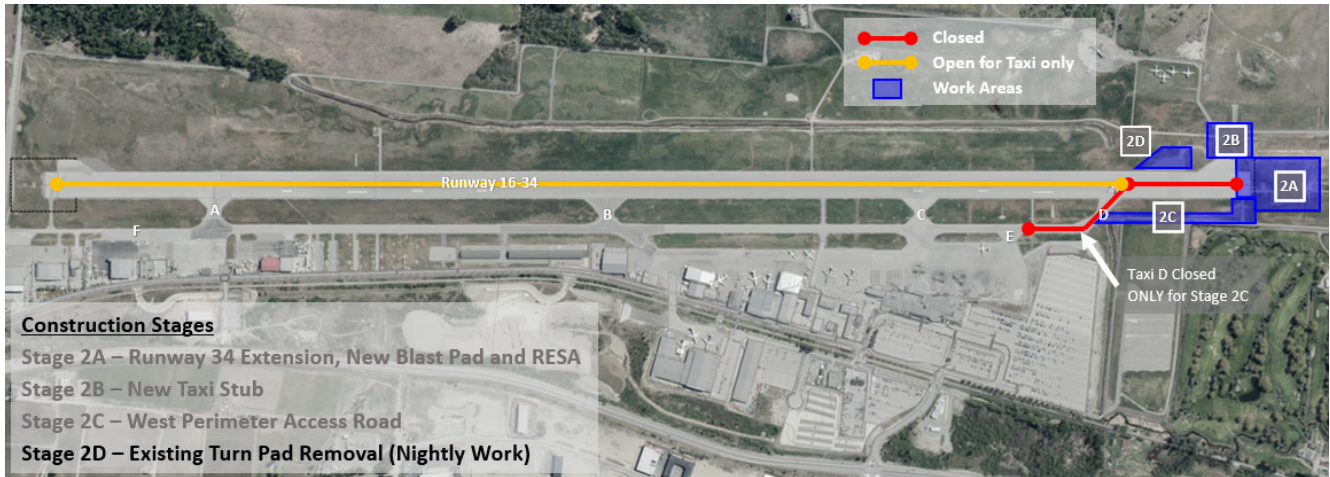


Figure 2: Stage 2 Construction Limit and Runway Availability for Stage 2D ONLY

Stage 1: Area A – Runway End Safety Area Construction – Runway 16 End (September 2022 – October 2022)

- First 1,025 feet (312.48 metres) of Runway 16 closed.
- Backtrack is not authorized north of Taxiway Alpha.
- Runway 16 MALSF unserviceable during construction working hours (approximately 1400Z to 0200Z). MALSF will be available during non-working times.
- Glide path out of service.
- Modified declared runway distances (all distances in feet):

Runway	16	34
Displaced	No Change	No Change
TORA	8,014	8,014
TODA	8,295	8,014
ASDA	8,014	8,014
LDA	7,838	7,475

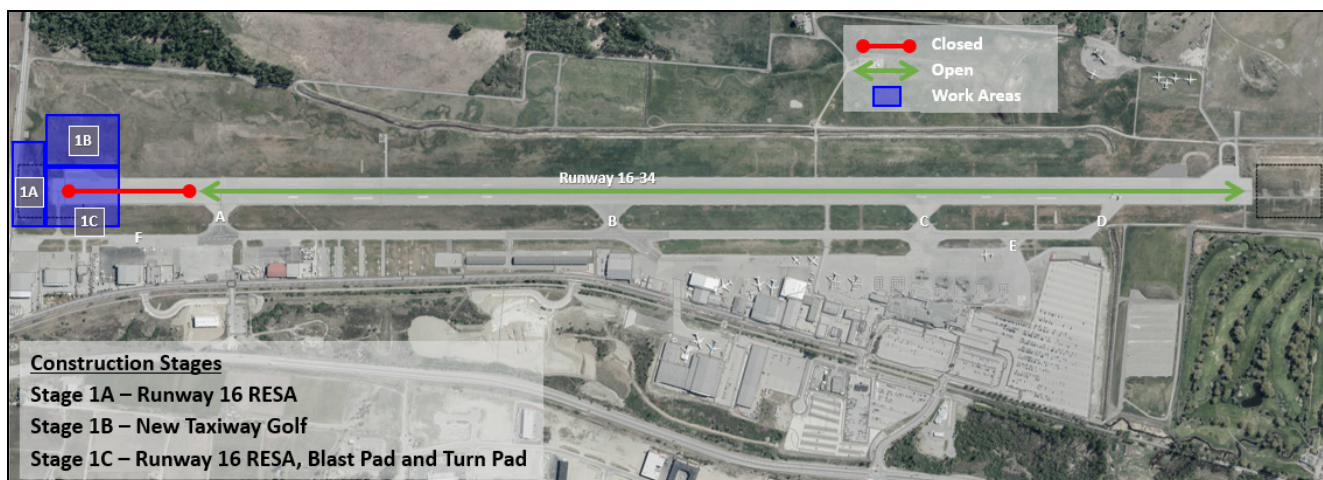


Figure 3: Stage 1 Construction Limit and Runway Availability

Procedure Impact Summary for Stage 1:

Procedure Name	Available/NOT AUTH
ILS Z RWY 16	NOT AUTH
ILS Y RWY 16	NOT AUTH
RNAV (GNSS) Z RWY 16	NOT AUTH
RNAV (RNP) X RWY 16	NOT AUTH
RNAV (GNSS) V RWY 16	LPV MINIMA NOT AUTH
LOC Z RWY 16	AVAILABLE
LOC Y RWY 16	AVAILABLE
RNAV (RNP) Z RWY 34	AVAILABLE
RNAV (GNSS) Y RWY 16	AVAILABLE
RNAV (GNSS) A (RWY 34 Circling Approach)	AVAILABLE
RNAV (GNSS) V RWY 16	LNAV ONLY AVAILABLE
NDB B	AVAILABLE

Departure Procedure	Runway 16/34
KELOWNA EIGHT DEP	AVAILABLE
MERYT TWO DEP	AVAILABLE
NOTIV THREE DEP	AVAILABLE
PRINCETON TWO DEP	AVAILABLE
DEPARTURE PROCEDURE (Westbank/Wingfield Routes)	AVAILABLE

For further information, please contact:

Kelowna International Airport
5533 Airport Way 1
Kelowna, BC V1V 1S1
Attn: Joe Yakimchuk, Project Manager

Tel.: 250-807-4322
E-mail: jyakimchuk@kelowna.ca



Chris Bowden
Acting Director, Aeronautical Information Management and Flight Operations