



Serving a world in motion  
[navcanada.ca](https://navcanada.ca)

2021-11-17

# CHANGES TO MSC PRODUCTS

Information on the changes taking  
effect on December 02, 2021

On December 02, 2021, several changes will be made to the following products issued by Meteorological Service of Canada (MSC). Several abbreviations will also be modified at the same time.

- SIGMET
- AIRMET
- TAF
- GFA and other graphical products (abbreviations only)

## REASONS FOR THE CHANGES

Changes were required to fulfill the following:

- › Our obligations to issue products that are compliant with the International Civil Aviation Organization (ICAO) and The World Meteorological Organization (WMO) Standards and Recommended Practices (SARPs) (including ICAO compliant abbreviations).
  - These will bring us in compliance with changes that were included in ICAO Annex 3 amendments 77 through 79
- › Align with the development of a new TAF production software to be deployed in the Canadian Meteorological Aviation Centers (CMAC) and the Defence Weather Services offices on December 2<sup>nd</sup>, 2021. This new TAF editor was developed based on latest ICAO and WMO standards.
  - ICAO Annex 3 and WMO Manual on Codes No 306
  - ICAO Abbreviations and Codes (Doc 8400)

# **EXPLANATION OF THE DIFFERENT CHANGES TO SIGMET, AIRMET AND TAF**

## SIGMET AND AIRMET SPECIFIC ABBREVIATIONS CHANGES

CURRENT	NEW	MEANING
CNCL / CNCLD	CNL	Cancel/Cancelled
ICG	ICE	Icing
INTSTY	INTST	Intensity
INTSFYG	INTSF	Intensifying
ISOLD	ISOL	Isolated
LN	LINE	Line
LLWS	L LVL WS	Low Level Wind Shear
MDT	MOD	Moderate
MOVG	MOV	Moving
PSBL	POSS	Possible, Possibly
SQLN	SQL	Squall line
QS	STNR	Stationary
UNKN	UNKNOWN	Unknown
VLD	VALID	Valid
WKNNG	WKN	Weakening
WD	WID	Wide
WTN	WI	Within

## SIGMET AND AIRMET

**Numerical value:** There will no longer be a space between the numerical value and the unit of measurement in the description of the location.

OLD:

CZWG WINNIPEG FIR MDT ICG OBS WTN **75 NM** OF LINE  
N5539 W09933 N5314 W09703 FL040/080 QS INTSFYG=

NEW:

CZWG WINNIPEG FIR MOD ICE OBS WI **150NM** WID LINE  
BTN N5539 W09933 N5314 W09703 FL040/080 STNR INTSF=

## SIGMET AND AIRMET

**Lines (corridor):** Will now describe the entire width of the line instead of the distance on both sides of the line.

OLD:

CZWG WINNIPEG FIR MDT ICG OBS **WTN 75 NM OF LINE**  
N5539 W09933 N5314 W09703 FL040/080 QS INTSFYG=

NEW:

CZWG WINNIPEG FIR MOD ICE OBS **WI 150NM WID LINE**  
BTN N5539 W09933 N5314 W09703 FL040/080 STNR INTSF=

## TROPICAL CYCLONE SIGMET

**Use of Polygons:** Currently, the area of CB is described as a circle only. The use of a polygon to describe this area will now be permitted, with the condition that the tropical cyclone centre shall always be contained in the polygon.

OLD:

CZQX GANDER DOMESTIC FIR TC ALBERTO OBS N4714  
W05424 CB TOP FL200 **WTN 60NM OF CENTRE** MOV ENE 20KT  
WKNG FCST 2310Z TC CENTRE N4725 W05119=

NEW:

CZQX GANDER DOMESTIC FIR TC ALBERTO PSN N4714  
W05424 **CB OBS WI N4818 W05507 – N4622 W05523 – N4631**  
**W05305 – N4824 W05305 – N4818 W05507** TOP FL200 MOV ENE  
20KT WKN=



## TROPICAL CYCLONE SIGMET

**CB area radius:** When the area of CB is described as a circle, and a forecast position (at the end of the SIGMET validity period) is used, the radius of the circle of the forecast area of CB will always be stated regardless of whether it is different from the initial area of CB or not.

CZQX GANDER DOMESTIC FIR TC ALBERTO OBS N4714 W05424

OLD: CB TOP FL200 WTN 60NM OF CENTRE MOV E 20KT WKNG FCST  
2310Z TC CENTRE N4725 W05119=

CZQX GANDER DOMESTIC FIR TC ALBERTO PSN N4714 W05424

NEW: **CB OBS WI 60NM OF TC CENTRE** TOP FL200 WKN FCST AT  
2310Z TC CENTRE PSN N4725 W05119 **CB WI 50NM OF TC  
CENTRE=**

## TROPICAL CYCLONE SIGMET

**Movement:** The elements “forecast time” and “forecast position” will no longer be used in conjunction with the element “movement or expected movement. In other words, either the movement (ex: MOVG E 20KT) is provided **or** the forecast position is provided, but not both.

CZQX GANDER DOMESTIC FIR TC ALBERTO OBS N4714 W05424

OLD: CB TOP FL200 WTN 60NM OF CENTRE MOV E 20KT WKNG FCST  
2310Z TC CENTRE N4725 W05119=

CZQX GANDER DOMESTIC FIR TC ALBERTO PSN N4714 W05424

NEW: CB OBS WI 60NM OF TC CENTRE TOP FL200 **WKN FCST AT  
2310Z TC CENTRE PSN N4725 W05119** CB WI 50NM OF TC  
CENTRE=

## TROPICAL CYCLONE + VOLCANIC ASH SIGMET

**Wording changes:** Addition of the terms AT and PSN.

**OLD:** CZQM MONCTON FIR TC OSCAR N4325 W06627 CB OBS WTN  
N4534 W06700 - N4644 W06500 - N4354 W05917 - N4315 W06245 -  
N4534 W06700 WKNG FCST 0320Z TC CENTRE N4646 W06258  
WTN N4643 W06424 - N4806 W06147 - N4447 W05637 - N4410  
W05854 - N4643 W06424=

**NEW:** CZQM MONCTON FIR TC OSCAR **PSN** N4325 W06627 CB OBS WI  
N4534 W06700 - N4644 W06500 - N4354 W05917 - N4315 W06245 -  
N4534 W06700 TOP FL420 WKN FCST **AT** 0320Z TC CENTRE **PSN**  
N4646 W06258 CB WI N4643 W06424 - N4806 W06147 - N4447  
W05637 - N4410 W05854 - N4643 W06424=

## TROPICAL CYCLONE + VOLCANIC ASH SIGMET

**Wording changes:** Addition of the term MT and removal of the term APRX.

CZEG EDMONTON FIR VA ERUPTION SPURR PSN N6117 W15215  
VA CLD OBS WTN N6412 W14059 - N6530 W13546 - N6411 W13411  
**OLD:** - N6227 W14100 - N6412 W14059 FL100/320 FCST 0405Z VA CLD  
**APRX** WTN N6625 W13532 - N6834 W12535 - N6604 W12405 -  
N6344 W13237 - N6625 W13532=

CZEG EDMONTON FIR VA ERUPTION **MT** SPURR PSN N6117  
W15215 VA CLD OBS WI N6412 W14059 - N6530 W13546 - N6411  
**NEW:** W13411 - N6227 W14100 - N6412 W14059 FL100/320 FCST AT  
0405Z WI N6625 W13532 - N6834 W12535 - N6604 W12405 - N6344  
W13237 - N6625 W13532=

## AIRMET

**SFC VIS:** Will now include a space, in the numerical value, between the whole statute and the fraction, if present.

OLD: CZEG EDMONTON FIR SFC VIS 1/2-**11/2**SM FG/BR - OVC  
CLD 200-500/1000FT OBS WI N5954 W10848 - N5700 W11205  
- N5621 W09851 - N5945 W09943 - N5954 W10848 STNR NC=

NEW: CZEG EDMONTON FIR SFC VIS 1/2-**1 1/2**SM FG/BR - OVC  
CLD 200-500/1000FT OBS WI N5954 W10848 - N5700 W11205  
- N5621 W09851 - N5945 W09943 - N5954 W10848 STNR NC=

## TAF SPECIFIC ABBREVIATION CHANGES

CURRENT	NEW	MEANING
CNCLD	CNL	Cancel, Cancelled, Cancelling, Cancellation
TD	DP	Dew Point
FLYG	FLY	Fly, Flying
WND	WIND	Wind

**Note:** The complete list of abbreviation changes can be found in the updated Manual of Word Abbreviations (MANAB)

## TAF

**Cancelled TAF:** A TAF being cancelled will show CNL only in the body of the TAF, and the reason will be included in the remarks section.

OLD: TAF AMD CYTL 201630Z 2014/2102 **FCST CNCLD DUE CLD**  
**HGT SENSOR INOP** RMK FCST BASED ON AUTO OBS. NXT  
FCST BY 210000Z=

NEW: TAF AMD CYTL 152330Z 1521/1608 **CNL**  
RMK **CLD SENSOR INOP**. NXT FCST BY 160200Z=

## TAF

**NIL TAF:** A NIL TAF will show NIL only in the body of the TAF, and the reason will be included in the remark section. A NIL TAF will have no valid period.

OLD: TAF CYTL 160138 **1602/1614 FCST NOT AVBL DUE NO OBS**  
RMK FCST BASED ON AUTO OBS. NXT FCST BY 160800Z=

NEW: TAF CYTL 160138Z **NIL**  
RMK **NO OBS.** NXT FCST BY 160800Z=



# TAF

**Amended and Delayed TAF:** The bulletin header of an Amended or Delayed TAF will now be sequenced using AAX for amended TAF and RRx for delayed TAF.

OLD: AAA always used for amended TAF and no indicator used for delayed TAF

NEW: FTCN33 CWA0 061800 **AAC** and FTCN33 CWA0 061800 **RRB**

## TAF

**Visibility:** A space will be added to the visibilities when given with a whole number and a fraction to align with METAR and SPECI format.

TAF CYHU 261138Z 2612/2712 04015G25KT 5SM –RA BR  
SCT007 OVC030

OLD: TEMPO 2612/2621 **21/2**SM –RA BR BKN007 OVC020  
FM262100 03020G30KT P6SM BKN015 OVC040  
RMK FCST BASED ON AUTO OBS. NXT FCST BY 261800Z=

TAF CYHU 261138Z 2612/2712 04015G25KT 5SM –RA BR  
SCT007 OVC030

NEW: TEMPO 2612/2621 **2 1/2**SM –RA BR BKN007 OVC020  
FM262100 03020G30KT P6SM BKN015 OVC040  
RMK FCST BASED ON AUTO OBS. NXT FCST BY 261800Z=

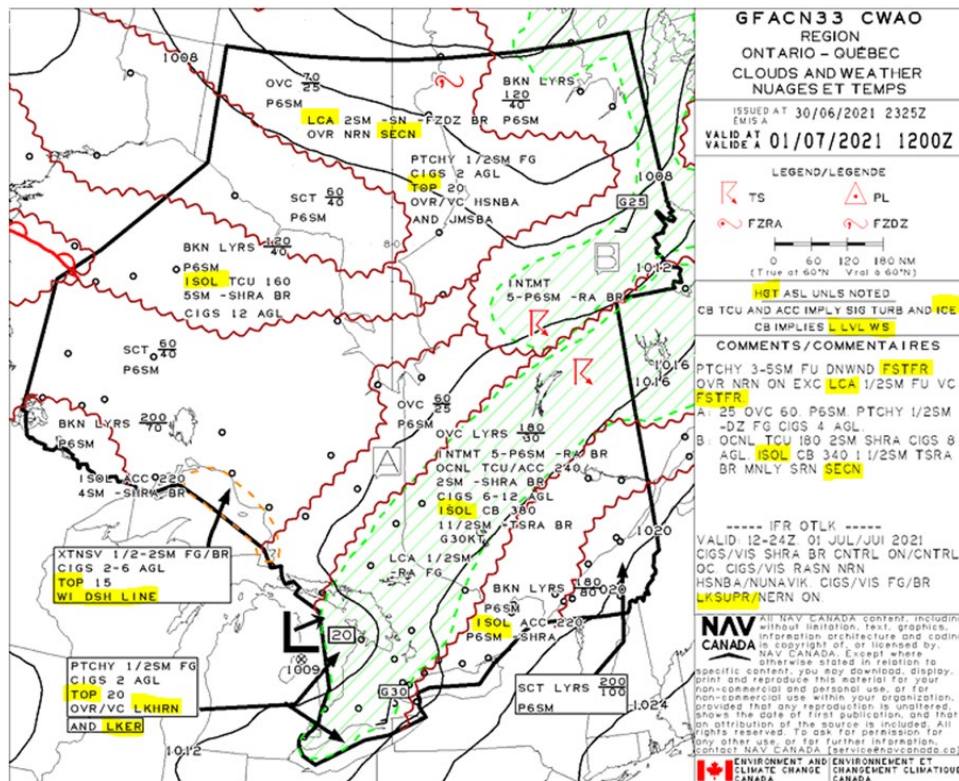
## TAF

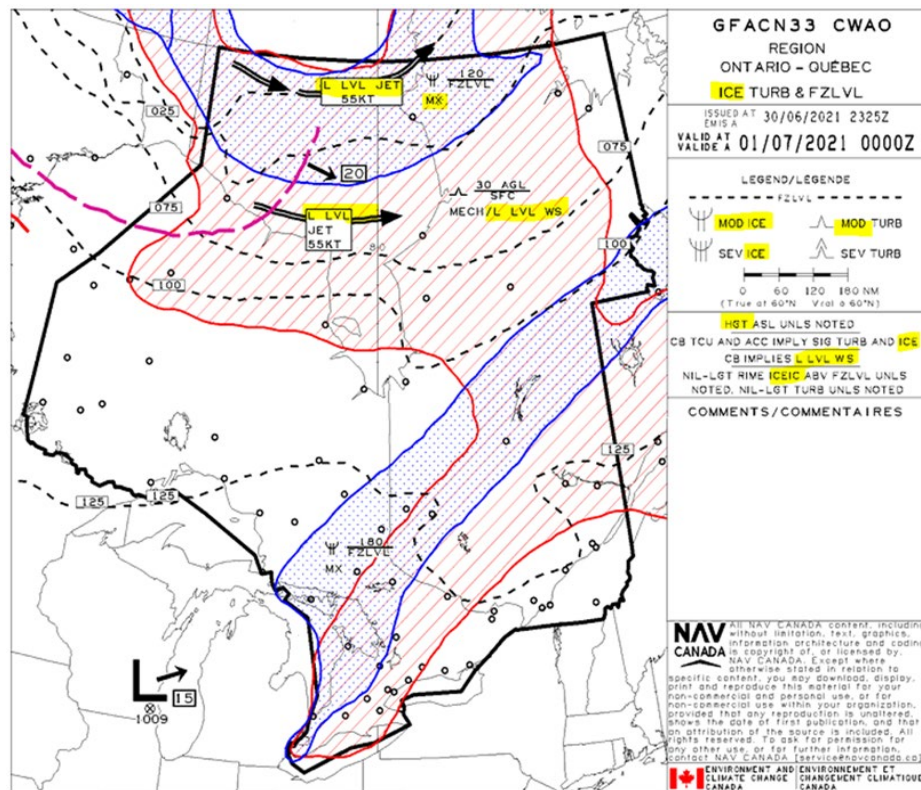
**Bulletin numbers:** New bulletin numbers will be created to further divide the TAFs with the addition of a 2x series for each flight information region (FIR), with the exception of Moncton FIR. Exact distribution of sites within the regions is found in MANAIR.

Bulletin used for TAFs	Flight Information Region
<b>FTCN21</b> and FTCN31	Vancouver FIR
<b>FTCN22</b> and FTCN32	Southern part of the Edmonton FIR
<b>FTCN23</b> and FTCN33	Northern part of the Edmonton FIR
<b>FTCN24</b> and FTCN34	Winnipeg FIR
<b>FTCN25</b> and FTCN35	Toronto FIR
<b>FTCN26</b> and FTCN36	Montreal FIR
FTCN37	Moncton FIR
<b>FTCN28</b> and FTCN38	Gander domestic FIR
<b>FTCN39</b>	Department of National Defence

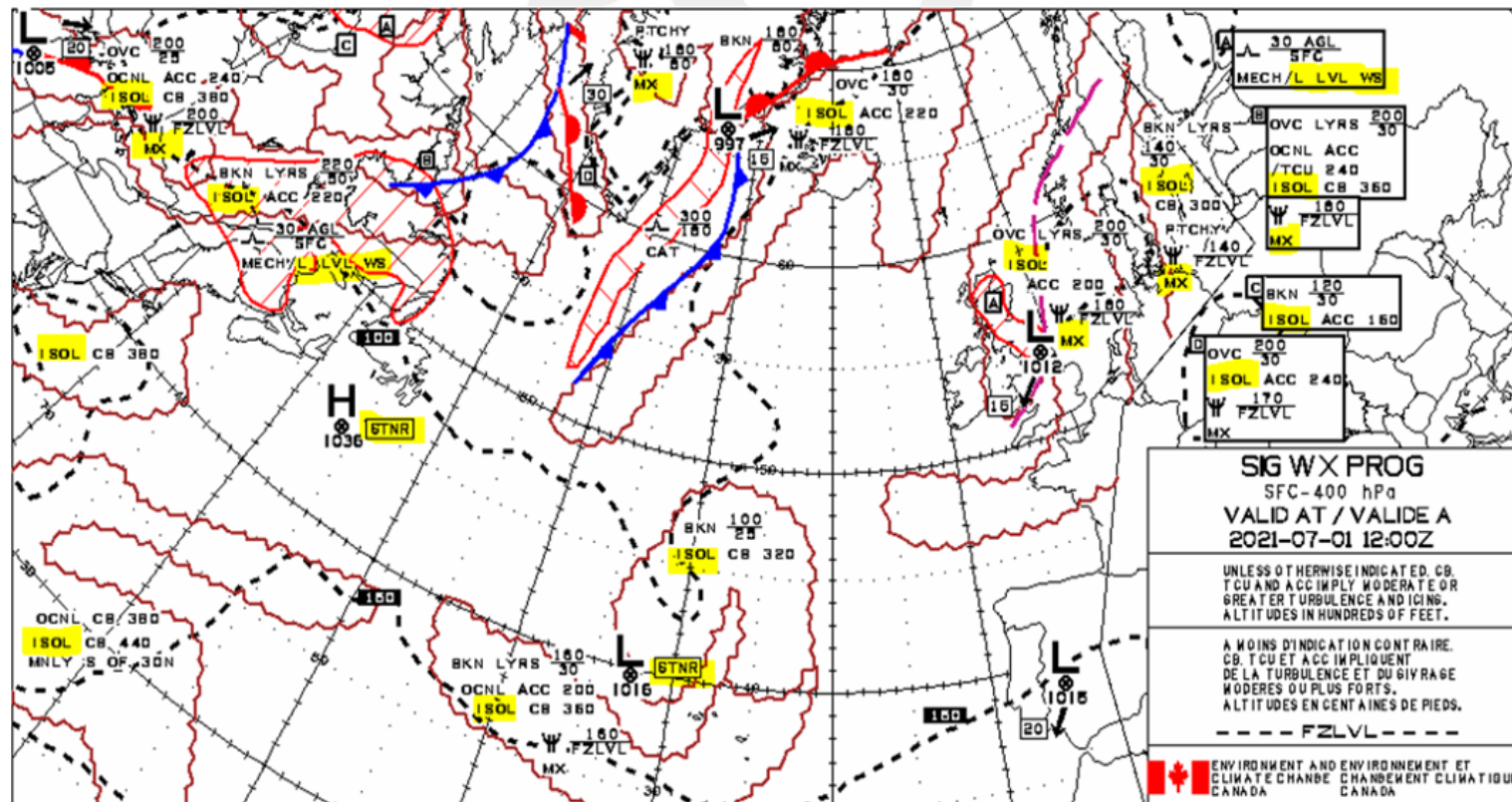
# **EXAMPLES OF GRAPHICAL PRODUCTS WITH ABBREVIATION CHANGES**

# GFA ABBREVIATION CHANGES (EXAMPLE 1)





## SFC-400 HPA SIG WX PROG ABBREVIATION CHANGES EXAMPLE





The complete list of changes is contained in the following documents:

- ✓ MANAIR and MANAB:  
<https://www.canada.ca/en/environment-climate-change/services/weather-manuals-documentation.html>

Please contact the following entities should you have any question regarding these changes:

- ✓ MSC: [f.clientelemeteoaviation-aviationweatherclients.f@ec.gc.ca](mailto:f.clientelemeteoaviation-aviationweatherclients.f@ec.gc.ca)
- ✓ NAV CANADA Aviation Weather Services:  
[AWS@navcanada.ca](mailto:AWS@navcanada.ca)

