

AERONAUTICAL INFORMATION CIRCULAR 012/2026

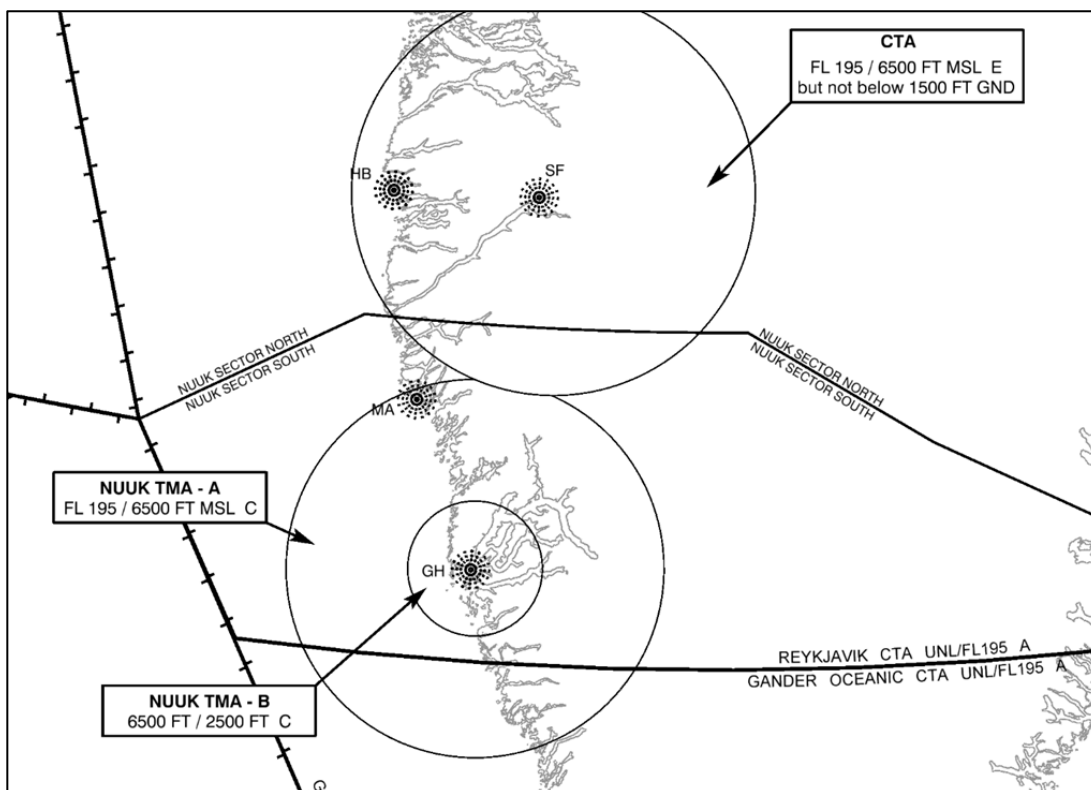
CHANGES TO NUUK (BGGH) TERMINAL CONTROL AREA (TMA)

Danish and Greenlandic airspace authorities are transitioning the airspace over southern Greenland within a 60NM radius of Nuuk Airport (BGGH) from uncontrolled airspace to controlled Class C airspace, effective 14 May 2026. Nuuk arrivals that were previously cleared to exit controlled airspace will now be handed off to Reykjavik CTA.

The changes in airspace will create two new TMAs and are depicted in the image below. These changes will be reflected in the applicable Canadian enroute charts on the 09 July 2026 publication date.

TMA B: A circle, 30NM radius, centered at the Aerodrome Reference Point (ARP)
64 11 27.32N 051 40 41.03W
From 2500 ft AMSL to 6500 ft AMSL; CLASS C but not below 700 ft AGL

TMA A: Along an arc of a circle, radius 84NM, centered at the ARP 64 11 27.32N 051 40 41.03W from 65 30 31.07N 050 35 56.75W clockwise to 65 35 04.00N 051 50 44.94W; thence along an arc of a circle, radius 90 NM (BGSF CTA), centered at 67 00 11N 050 40 31W from 65 35 04.00N 051 50 44.94W to 65 30 31.07N 050 35 56.75W
From 6500 ft AMSL to FL 195; Class C but not below 1500 ft AGL



Figure

For further information, please contact: NAV CANADA

Attn: Robert Fleming, Manager ACC Operations, Gander ACC
E-mail: robert.fleming@navcanada.ca