

AIP CANADA (ICAO) SUPPLEMENT 66/20

MAURICIE (QUEBEC) CREATION OF A COMMON FREQUENCY AREA

The Mauricie Region, particularly the area North of Trois-Rivières up to the northern boundary of La Mauricie National Park, on both sides of the St-Maurice River, is home to a large number of aerial sightseeing flights. There are also several water aerodromes and land aerodromes in this sector, not counting aircraft coming from various other areas to enjoy the view of the landscape.

In consideration of the amount of aviation activity, involving aircraft on various frequencies, there is a potential for conflicts between aircraft who are unaware of the presence or the position of one another.

A common frequency area (CFA) is a designated area within which all pilots should select the assigned radio frequency, broadcast their position and intentions as well as maintain a listening watch on the frequency.

In order to increase the level of aviation safety in this part of Mauricie, Transport Canada is designating a Common Frequency Area as follows

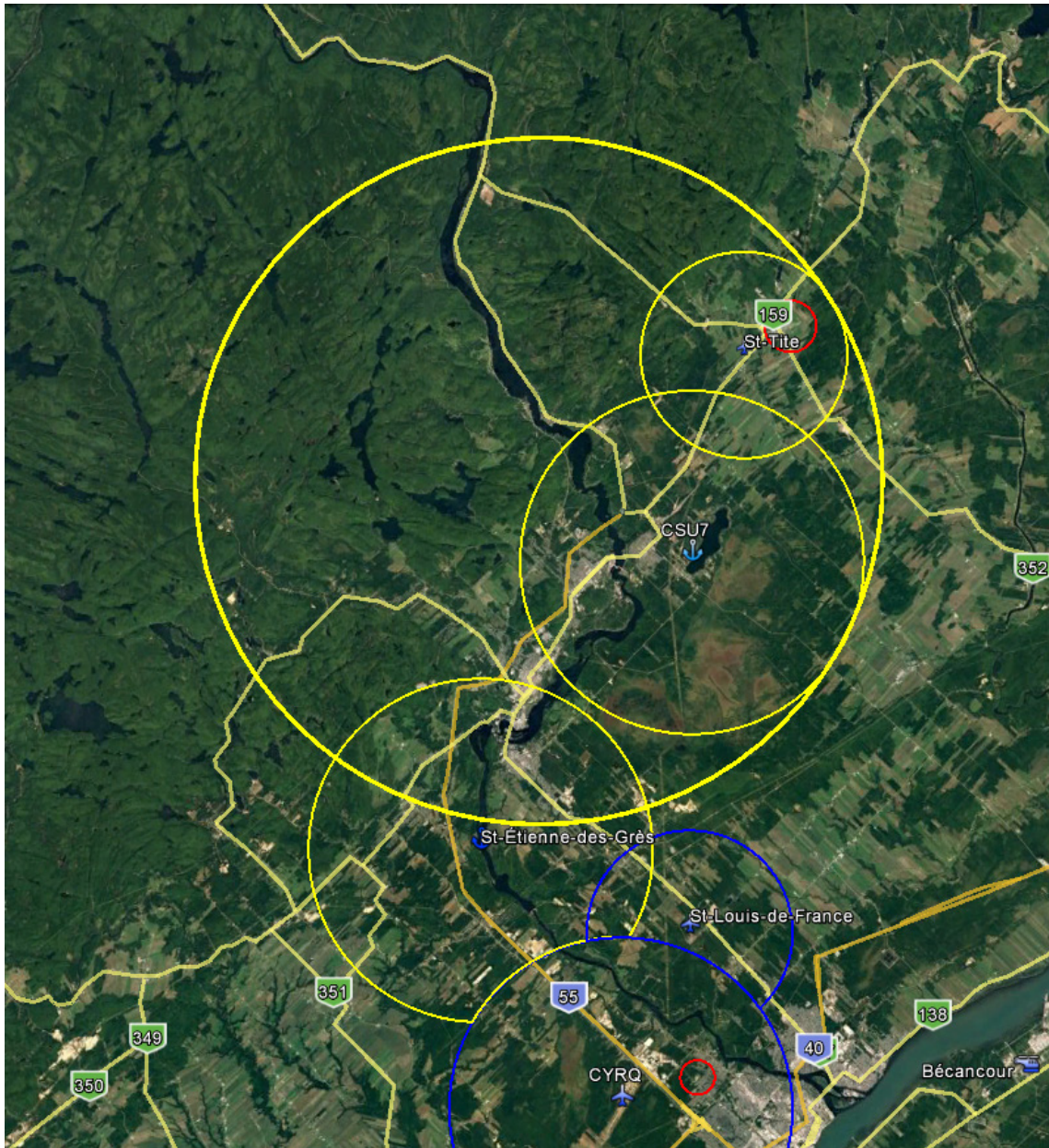
1. Within a 10 NM radius of N46 39 23 W72 43 55
2. The area extends upwards from the surface to 3500 feet ASL
3. The frequency to be used by all pilots operating in the CFA is **122.7 MHz**

The circle with a 10NM radius encompasses the ATF of Lac-à-à-Tortue (water aerodrome and land aerodrome) as well as the annual temporary MF for the Festival Western de St-Tite which keep their frequency.

The CFA extends more than 4 NM inside the ATF area of St-Étienne-des-Grès (CHA2) water aerodrome. For this reason, the ATF frequency at CHA2 is changed for 122.7 MHz.

The CFA extends more than 1 NM inside the ATF area of St-Louis-de-France (CSJ5). For this reason, the size of the ATF at CSJ5 is reduced to a 3 NM radius.

A depiction of the Common frequency Area – Mauricie is included hereafter.



NOT FOR NAVIGATION PURPOSES

The Common Frequency Area – Mauricie is depicted by the large yellow circle.

The ATF and MF areas also on 122.7 are depicted in smaller yellow circles.

Bernard Fortin
Associate Director, Operations
Civil Aviation – NAH
Transport Canada, Quebec Region