

# AIP CANADA (ICAO) SUPPLEMENT 48/20

## NEW VISUAL FLIGHT RULES (VFR) CHECKPOINTS AND ARRIVAL ROUTES AT THE TORONTO/BILLY BISHOP TORONTO CITY AIRPORT (CYTZ)

(Replaces AIP Supplement 37/20)

Amendments have been made to the Toronto/Billy Bishop Toronto City Airport (CYTZ) VFR Terminal Procedures Chart (VTPC) to increase safety for arriving and departing aircraft, and aircraft transiting the control zone (CZ). Pilots transiting the CYTZ CZ are expected to follow the published VFR routes, unless alternate instructions are provided. New checkpoint and call-up points located north and west of the CYTZ CZ and to the entry routes have been created.

To the north, call-up “401 and Leslie” and “401/404” have been created to add additional entry and exit routes north of the CYTZ CZ from or to the Toronto/Butterville Municipal Airport (CYKZ) (see chart in Figure 1 and Table 1).

To the west, a new checkpoint “Humber Bay” has been created to modify the entry route west in the CZ (see chart in Figure 1 and Table 1). Aircraft transiting the CYKZ CZ are recommended to transition to the new routes via “Centrepoint Mall” when travelling southbound and to the “Rail Yards” for transit routes northbound through the CYKZ airspace.

The *Canada Flight Supplement* (CFS) VTPCs as well as the VFR terminal area charts (VTAs) will be amended accordingly. A new chart detailing the north and west arrival routes will also be added to the CFS (see chart in Figure 1 and Table 1). The text in the CFS, “PROCEDURES (PRO)” section will be modified with the following addition:

### CZ Airspace Split for VFR Flights

Toronto/Billy Bishop Toronto City Airport (CYTZ) CZ is divided into two sectors for VFR flights with separate frequencies:

#### ARRIVALS

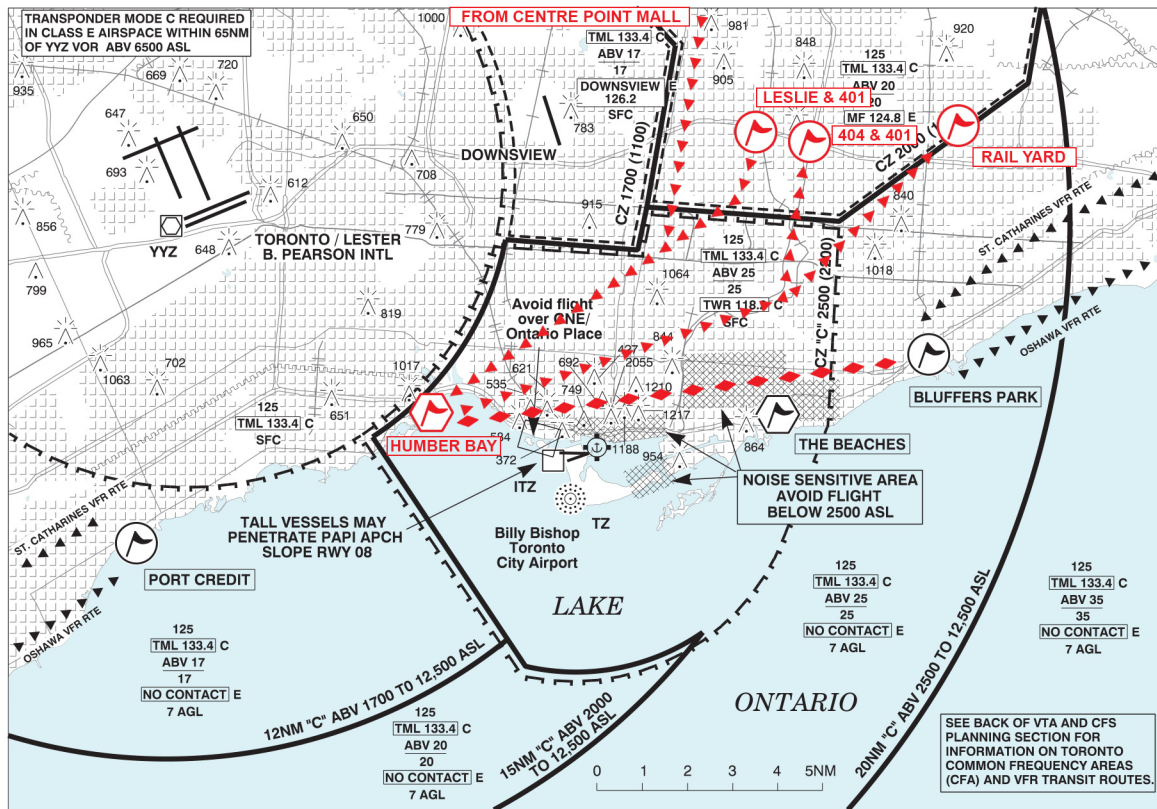
- Aircraft entering the CZ via 401 and Leslie, Humber Bay, or Bluffers Park contact (CTC) Billy Bishop Toronto City control tower (TWR) on 118.2 MHz.
- Aircraft entering the CZ from the north must CTC Billy Bishop Toronto City TWR on 118.2MHz when crossing the 401 or at the publicized waypoints depending on route of travel.
- Aircraft entering the CZ from over Lake Ontario to the south must CTC Billy Bishop Toronto City TWR on 119.2 MHz.

**VFR ARR/DEP ROUTES – DEPARTURES**

- Aircraft departing the CZ to CYKZ not above 2,000 feet above sea level (ASL) unless cleared to enter Class C airspace.
- Aircraft departing the CZ at Humber Bay not above 1,700 feet ASL unless cleared to enter Class C airspace.
- Aircraft departing the CZ via Bluffer’s Park not above 2,500 feet ASL unless cleared to enter Class C airspace.

All VFR aircraft should anticipate arrival and departure instructions from air traffic control (ATC).

**These changes will take effect on 21 May 2020 at 0901Z Coordinated Universal Time (UTC).**



**Figure 1: Toronto/Billy Bishop Toronto City Airport (CYTZ) VFR Terminal Procedures Chart (NOT SUITABLE FOR NAVIGATION)**

Table 1

Location	IDENT	Latitude/Longitude
Bluffer's Park	VCBLF	N 43° 42' 13" W 079° 14' 11"
Port Credit	VCPCR	N 43° 33' 00" W 079° 35' 00"
The Beaches	VCBCH	N 43° 39' 48" W 079° 18' 24"
Humber Bay	VCHUB	N 43° 37' 32" W 079° 28' 34"
401/404	VCFOF	N 43° 46' 04" W 079° 20' 00"
401 and Leslie	VCLES	N 43° 45' 58" W 079° 21' 55"
Rail Yard	VCRYD	N 43° 48' 17" W 079° 15' 07"

For further information, please contact:

NAV CANADA  
Customer Service  
77 Metcalfe Street  
Ottawa, ON K1P 5L6

Tel.: 800-876-4693  
Fax: 877-663-6656  
E-mail: [service@navcanada.ca](mailto:service@navcanada.ca)



James Ferrier  
Director, Aeronautical Information Management