

AIP CANADA (ICAO) SUPPLEMENT 16/20

MONTREAL/PIERRE-ELLIOTT-TRUDEAU INTERNATIONAL AIRPORT (CYUL) REDUCED RUNWAY OPERATIONS 30 JANUARY 2020 TO 16 JULY 2020

Introduction

Since 19 December 2019, displaced Threshold 06L has been maintained and will remain until approximately 16 July 2020. The threshold of Runway 06L is displaced by 3,932 feet.

The 2019 runway rehabilitation between Threshold 06L and B2 Taxiway has been temporarily suspended for the winter period. It will begin again on 16 March 2020 and run until approximately 8 June 2020.

The operating restrictions described below will be in effect throughout the construction period. Mitigation measures concerning area navigation (RNAV) procedures on Runway 06L will be effective as of 30 January 2020 until 16 July 2020.

Operating Restrictions

- Low Visibility procedures are not authorized.
- Taxiway Echo between Runway 06L/24R and Taxiway Bravo is closed.
- Taxiway Golf between Runway 06L/24R and Main Apron is closed.
- Access Runway 06L for departure via Taxiway Bravo 2.

Actual Runway 06L-24R Configuration Until Approximately 8 June 2020

- Runway Threshold 06L displaced 3,932 feet (first 2,948 feet CLSD THLD 06L further displaced 984 feet)
- Threshold 06L ELEV: 102 feet
- Touch down zone elevation (TDZE) Runway 06L: 106 feet
- Approach lighting, touch down zone lighting, and runway centreline lighting 06L: not available.
- Temporary precision approach path indicator (PAPI) P3 on left side of Runway 06L: available.
- Temporary runway threshold identification light (RTIL) 06L: available.

Note: Runway edge lights will be lighted by red and white lights between the displaced Threshold 06L and the relocated end of Runway 24R. Runway edge lights beyond the relocated end of Runway 24R will be extinguished as shown in Appendix A.

Instrument Approach Facilities 30 January 2020 to 16 July 2020

- ILS 06L: not available
- ILS CAT II 06L: not available
- RNAV GNSS RWY 06L: has been redesigned and will provide guidance to the displaced threshold
- ILS RWY 24R: *available until 16 March 2020 only*
- RNAV (GNSS) RWY 24R: available

Declared distances from 19 December 2019 1700Z until 16 March 2020 1600Z

Declared Distances	TORA	TODA	ASDA	LDA
RWY 06L	7068	7068	7068	7068
RWY 24R	8248	9232	8248	7068

Declared distances from 16 March 2020 1600Z until 8 June 2020 1700Z

Declared Distances	TORA	TODA	ASDA	LDA
RWY 06L	7068	7068	7068	7068
RWY 24R	7068	7268	7852	7068

RUNWAY	INTERSECTION	TORA
06L	G	Not available
	B2	6975
	E	Not available
	B1	4636
	B3	2635
24R	B3	7730
	B1	5748
	E	Not available
	B2	Not available
	G	Not available

Note 1: Pilots should note that there will be workers and equipment (vehicles with rotating/flashing amber obstruction lights) inside the work site.

Note 2: All runway lights outside the area available for landing/take off will be extinguished due to construction.

Enquiries

Any questions concerning this supplement should be directed to:

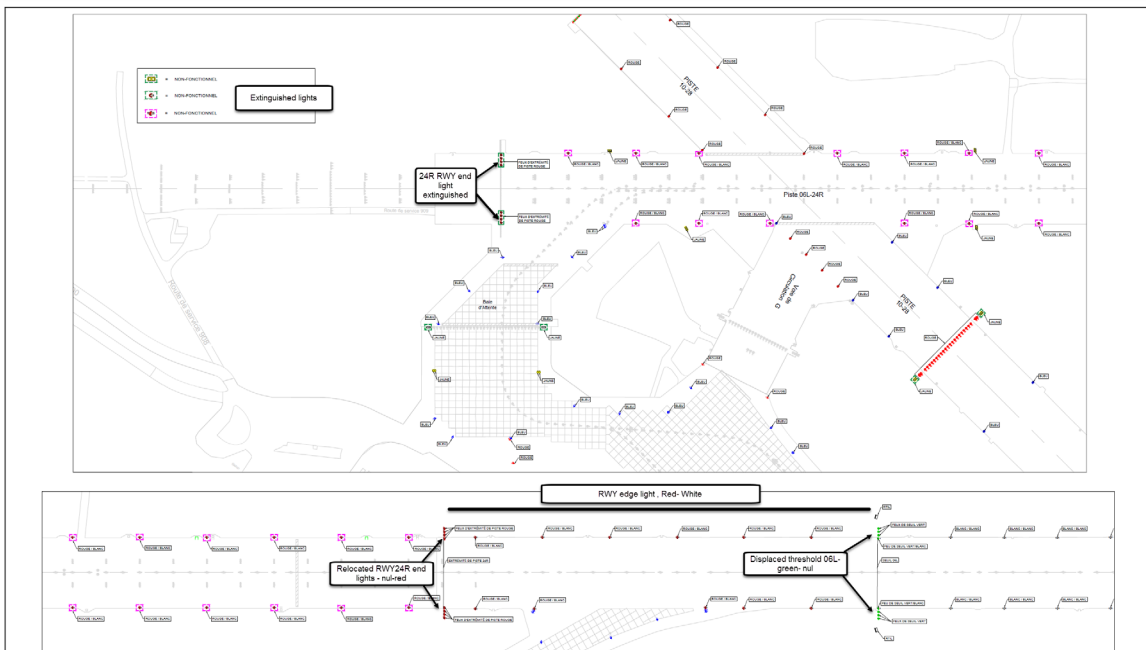
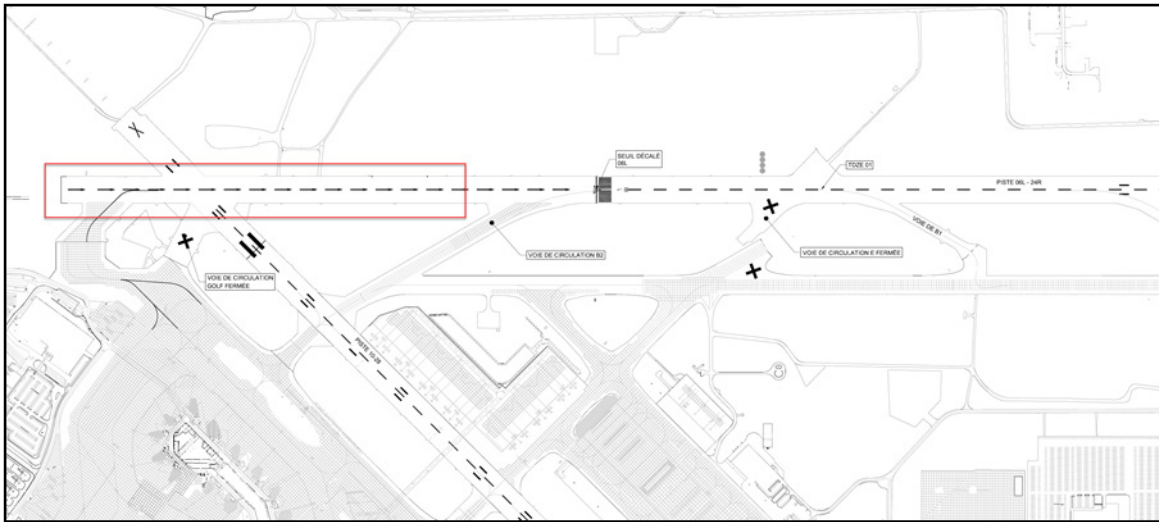
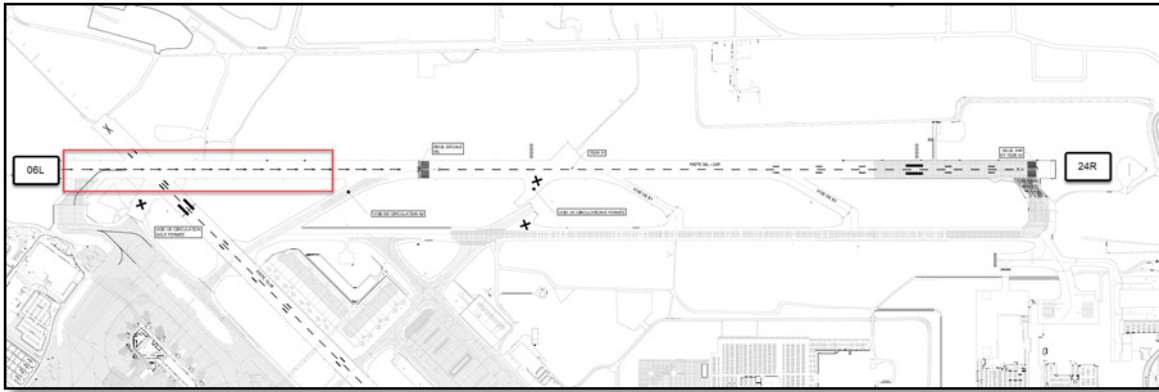
Aéroport de Montréal (ADM)
Airsides Operations Supervisor

Tel.: 514-633-3488

A handwritten signature in black ink, appearing to read 'James Ferrier', with a long horizontal stroke extending to the right.

James Ferrier
Director, Aeronautical Information Management

Appendix A



Runway Lighting Plan. Valid as of 19 December 2019 until 16 March 2020.