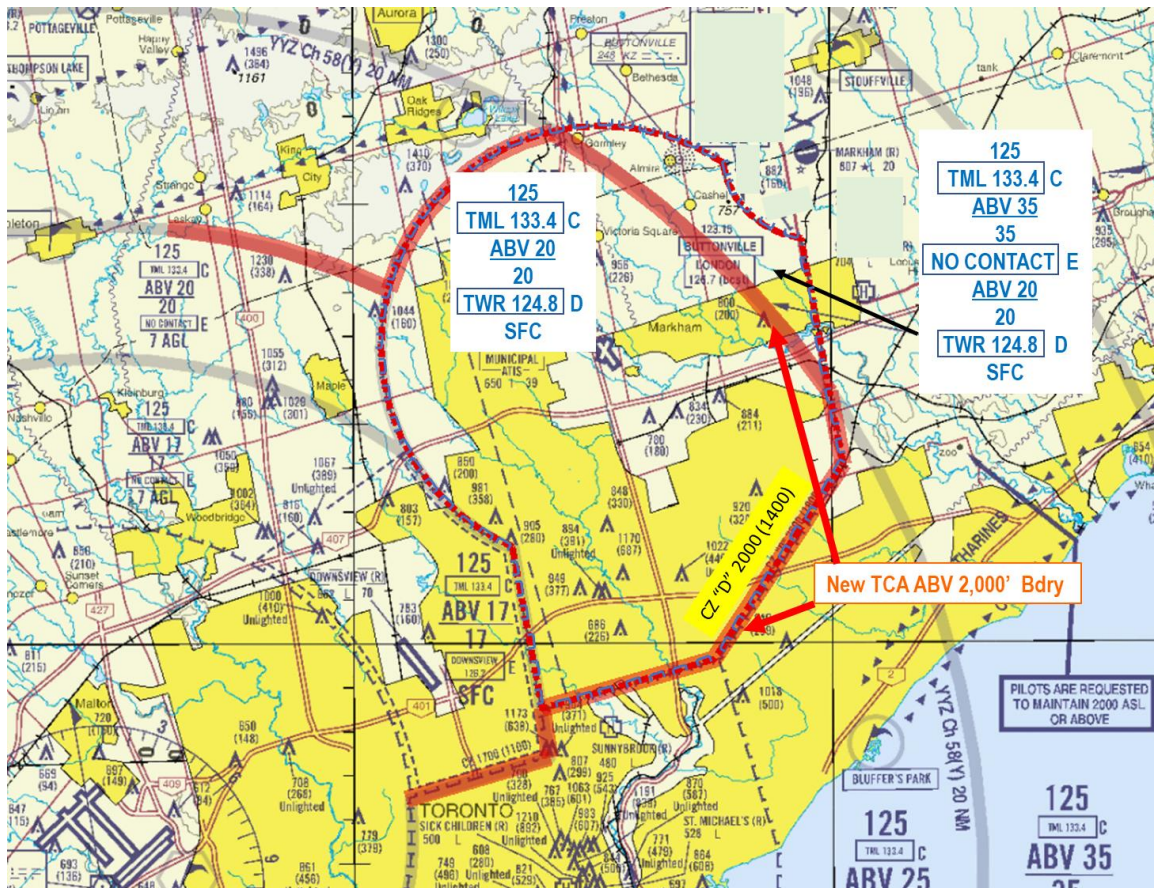


# NOTICE OF CHANGE

## BUTTONVILLE (CYKZ) CONTROL ZONE AND TORONTO TERMINAL CONTROL AREA CHANGES TORONTO, ONTARIO

To enhance the management of aircraft traffic at the Toronto Lester B Pearson International Airport (CYYZ), the ceiling of the Buttonville control zone (CZ) will be lowered to 2,000 ASL. In addition, the 2,000' ASL Toronto Terminal Control Area (TCA) boundary is being expanded to encompass most of the Buttonville CZ (See map sketch below).

**These changes take effect 13 September 2018, at 09:01 Coordinated Universal Time (UTC).** Refer to AIC 23/18 to be published 16 August 2018 and AIP Supplement 50/18 to be published 13 September 2018, until the appropriate aeronautical publications are amended.



NOT FOR NAVIGATION



For further information please contact:

NAV CANADA  
Customer Service  
77 Metcalfe Street  
Ottawa, ON K1P 5L6

Tel.: 800-876-4693

Fax: 877-663-6656

E-mail: [service@navcanada.ca](mailto:service@navcanada.ca)