

AIP CANADA (ICAO) SUPPLEMENT 60/19

QUEBEC REGION FESTIVAL WESTERN DE SAINT-TITE SEPTEMBER 4–17, 2019

This supplement aims to inform the aeronautical community operating in the Mauricie area about the Festival Western de Saint-Tite as well as the operational limitations and restrictions in the vicinity of the Saint-Tite aerodrome (unknown location indicator) and the Lac-à-la-Tortue land and water aerodromes (CSL3 and CSU7). These aerodromes are all shown on the Montreal VFR Navigation Chart (VNC) AIR 5002.

To increase the level of safety at this event, and pursuant to section 5.1 of the *Aeronautics Act*, Transport Canada (TC) is creating a restricted area over the town, centered on the stables located east of the town. TC is also designating a mandatory frequency (MF) area centered on the aerodrome located southwest of the town but encompassing all of Saint-Tite.

Restricted Area

Section 5.1 of the *Aeronautics Act* states that: “The Minister or any person authorized by the Minister may by notice prohibit or restrict the operation of aircraft on or over any area or within any airspace, either absolutely or subject to any exceptions or conditions that the Minister or person may specify [...]”

Pursuant to section 5.1 of the *Aeronautics Act*, a restricted area is established within a 0.75 NM radius around the stables at the following coordinates: 46°43'47"N 72°33'12"W, from the surface to 1 500 ft ASL (1 066 ft AGL). No aircraft shall be operated within the area described except MEDEVAC flights, police operations and TC aircraft. The restriction shall be in effect from September 4, 2019 through to September 17, 2019. The restricted area is depicted as a red circle on the area chart and on the satellite image hereunder.

MF Area

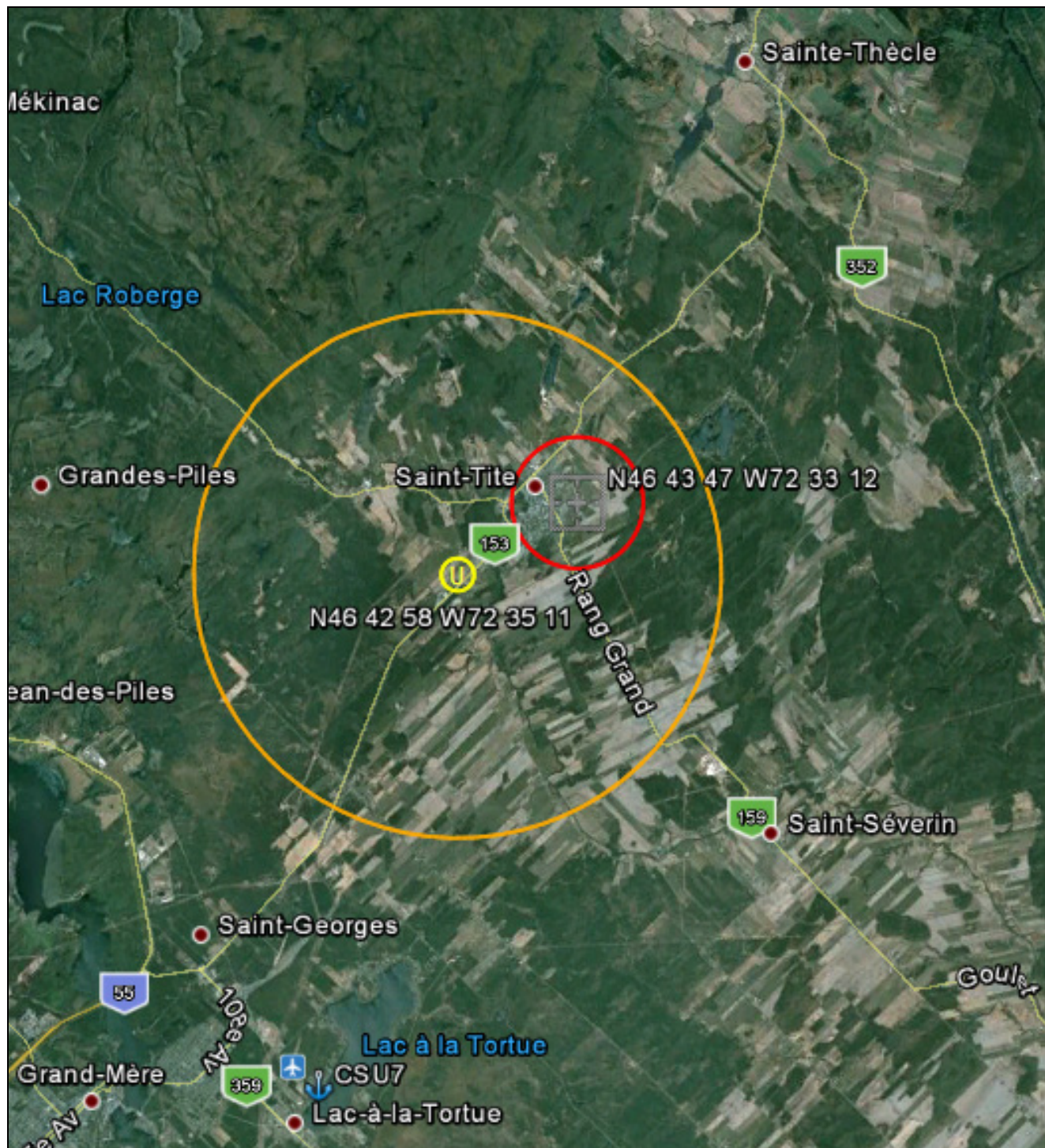
To maximize the safety level, an MF area will be designated by TC. The area (without ground station) consists of a 3 NM radius centered on the Saint-Tite aerodrome (approximate coordinates: 46°42'58"N 72°35'11"W), from the surface to 3 500 ft ASL (3 075 ft AGL). The MF is 122.7 MHz. Pilots must follow the MF reporting procedures set out in *Canadian Aviation Regulations* (CARs) 602.97 to 602.103 as well as the information contained in RAC sections 4.5.4, 4.5.6 and 4.5.7 of the *Transport Canada Aeronautical Information Manual* (TC AIM) which can be downloaded here:

<http://www.tc.gc.ca/eng/civilaviation/publications/tp14371-menu-3092.htm>.

The MF area is depicted as an orange circle on the satellite image hereunder.

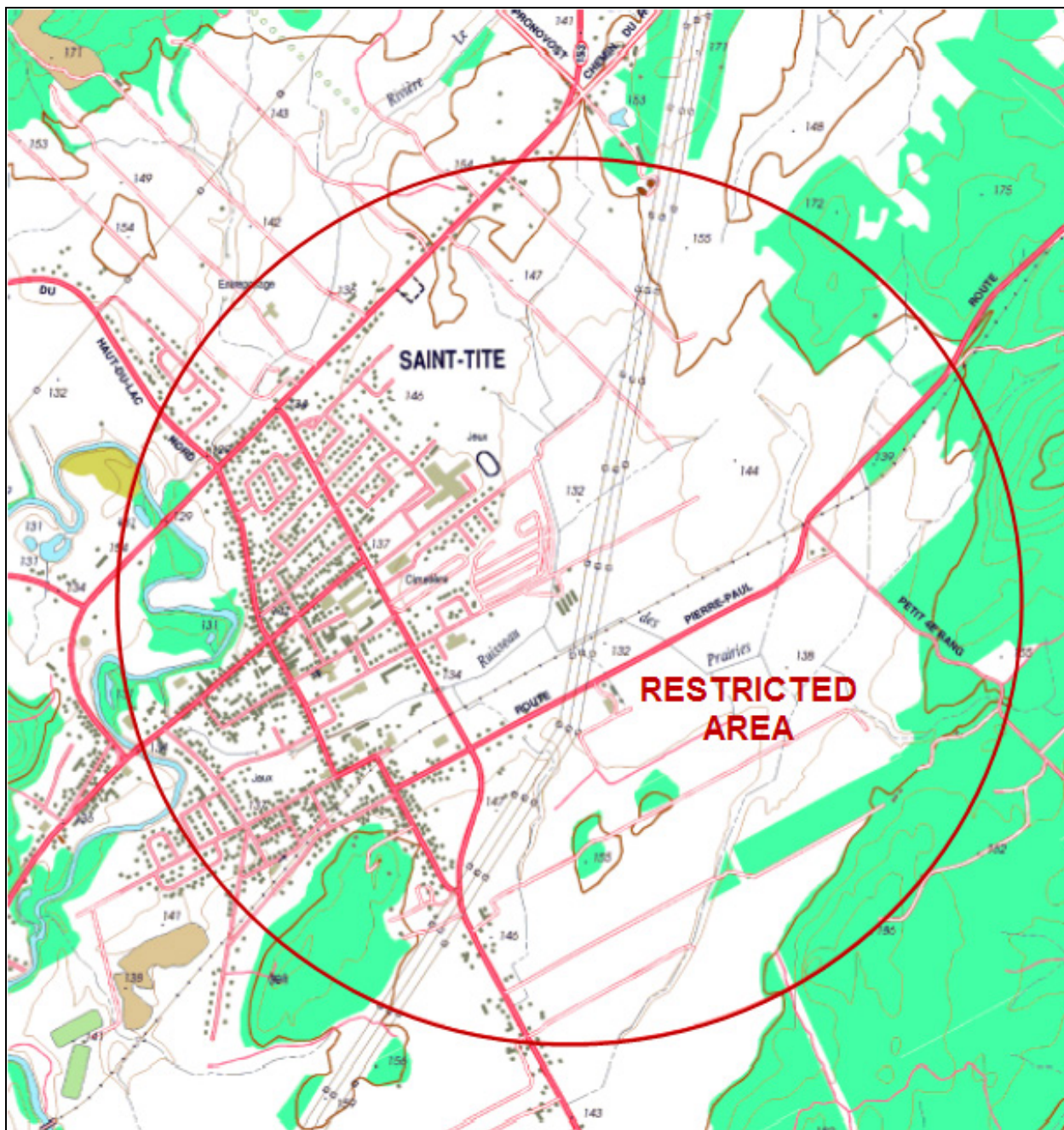
NOTAM

A NOTAM will be issued, under the Montréal FIR – CZUL NOTAM file, indicating the effective times of the restricted area pursuant to section 5.1 of the *Aeronautics Act*. A NOTAM will be issued, under the Lac-à-la-Tortue aerodrome (CSL3) CYQB NOTAM file, indicating the effective times of the MF area and the restricted area pursuant to section 5.1 of the *Aeronautics Act* as well as any last-minute changes.



MF area is depicted in orange (3 NM radius surface [SFC] to 3 500 ft ASL on 122.7 MHz)

Restricted airspace is depicted in rouge (0.75 NM radius SFC to 1 500 ft ASL).



Bernard Fortin

Bernard Fortin
Associate Director, Operations
Civil Aviation – NAH
Transport Canada, Quebec Region