

# AIP CANADA (ICAO) SUPPLEMENT 7/18

## TRANSMISSION LINE AND CRANES EDMONTON TO FORT MCMURRAY, ALBERTA

A transmission line and cranes will be erected between Edmonton, Alberta and Fort McMurray, Alberta. The maximum height is 302 feet above ground level (AGL) or 3,155 feet above sea level (ASL). The structures will not be lighted or painted.

The transmission line and cranes will be bounded within the following coordinates:

|               |                |                     |
|---------------|----------------|---------------------|
| 53° 19' 42" N | 114° 41' 44" W | to                  |
| 56° 02' 30" N | 114° 35' 43" W | to                  |
| 56° 53' 03" N | 112° 00' 59" W | to                  |
| 56° 43' 30" N | 111° 32' 25" W | to                  |
| 55° 58' 41" N | 114° 00' 28" W | to                  |
| 53° 19' 41" N | 114° 09' 52" W | to                  |
| 53° 19' 42" N | 114° 41' 44" W | the starting point. |

The centre of the area within which the transmission line and cranes are bounded is approximately 16 nautical miles (NM) south southeast (SSE) of Calling Lake Airport (CFK4). (See map sketch below.) Details of any procedure changes implemented due to this crane activity will be promulgated via NOTAM, publication amendment, or both.

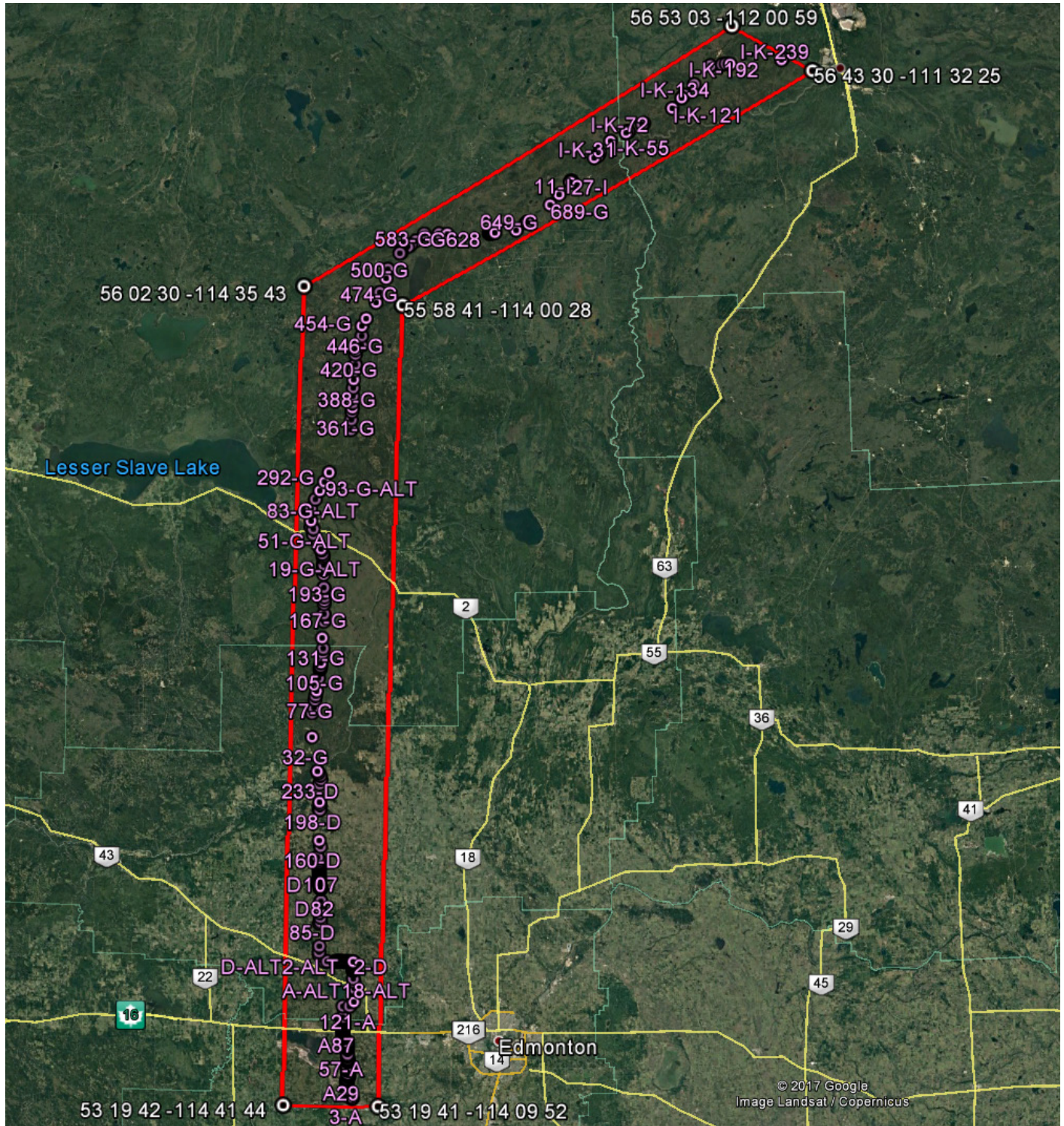
For further information, contact:

NAV CANADA  
1601 Tom Roberts Avenue  
P.O. Box 9824, Station T  
Ottawa, ON K1V 1E5  
Attention: Gheorghe Adamache, Manager  
AIM IFP-Service Delivery Operations

Tel.: 866-577-0247  
Fax: 613-248-4094  
E-mail: [landuse@navcanada.ca](mailto:landuse@navcanada.ca)



James Ferrier  
Director, Aeronautical Information Management



NOT FOR NAVIGATION