

AIP CANADA (ICAO) SUPPLEMENT 23/17

CONSTRUCTION WORK AT MONTRÉAL–PIERRE ELLIOTT TRUDEAU INTERNATIONAL AIRPORT (YUL)—SUMMER 2017

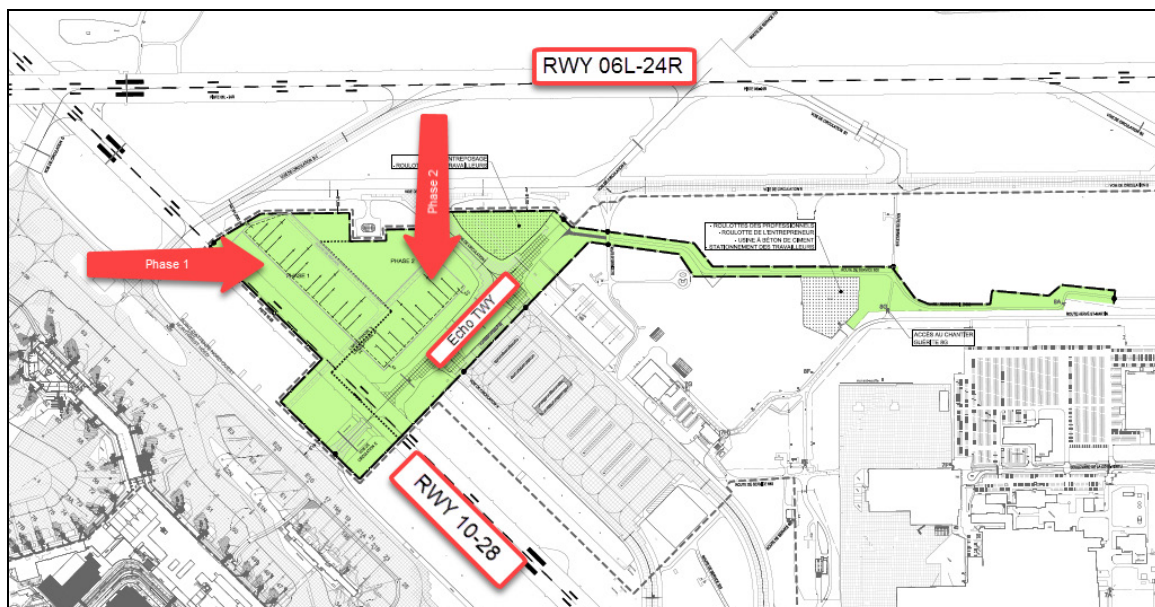
Parking Area and Taxiway Construction

A new aircraft parking area will be constructed North of Runway 10-28 (North Parking) and the Taxiway Echo between Taxiway Bravo and Runway 10-28 will be rebuilt:

- From 1 May 2017 until the end of September 2017.
- Stands will be identified as follows from West to East:
N1, N1A, N1B, N2, N2A, N2B, N3, N3A, N3B, N4, N4A, N4B, N5, N5A, N5B, N6, N6A, N6B, N7, N7A, and N7B
- Stands can only be used for parking. Embarking and disembarking operations are prohibited. Aircraft should be towed in and out.
- Phase 1 will open 15 July 2017, Stands N1 to N4.
- Phase 2 will open end of September 2017, Stands N5 to N7.

Impacts during construction:

- Runway 10-28 will be closed.
- Taxiway Echo will be closed between the Main Apron and Bravo taxiway.
- Taxiways India and Hotel will be closed.
- Temporary restrictions on Runway 06L-24R when the crane is in use (use will be planned for outside the peak period).
- Reduced and Low visibility procedures will be unavailable.

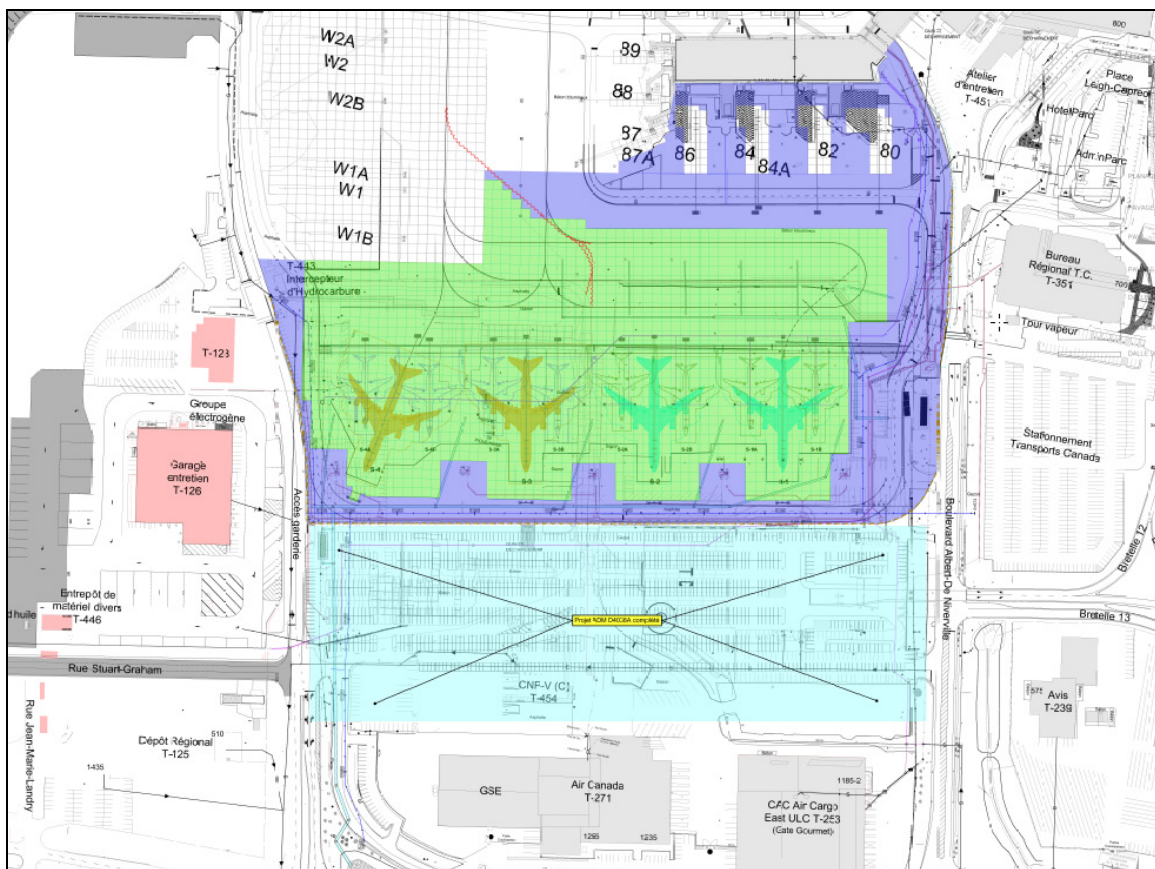


South-West Apron Expansion

- This will be a 3-year project, from 15 March 2017 until October 2019.
- The expansion will result in 4 new type E Stands, or 8 type C Stands, or both.
- Stands will be for operational use, boarding, and disembarking.
- Stands will be identified as follows from West to East:
S1, S1A, S1B, S2, S2A, S2B, S3, S3A, S3B, S4, S4A, and S4B.

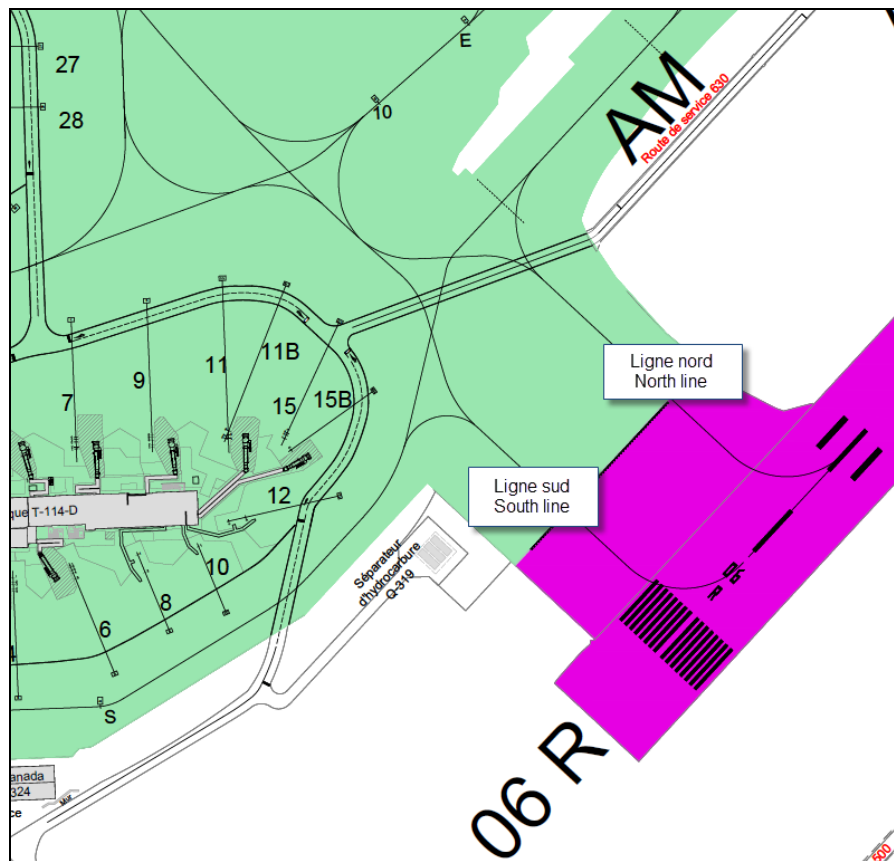
Impacts during construction:

- Gate 80 will be closed from April 2017 to August 2017.
- Aircraft pushing back from Gate 82 to Gate 84 must follow Apron control temporary instructions.



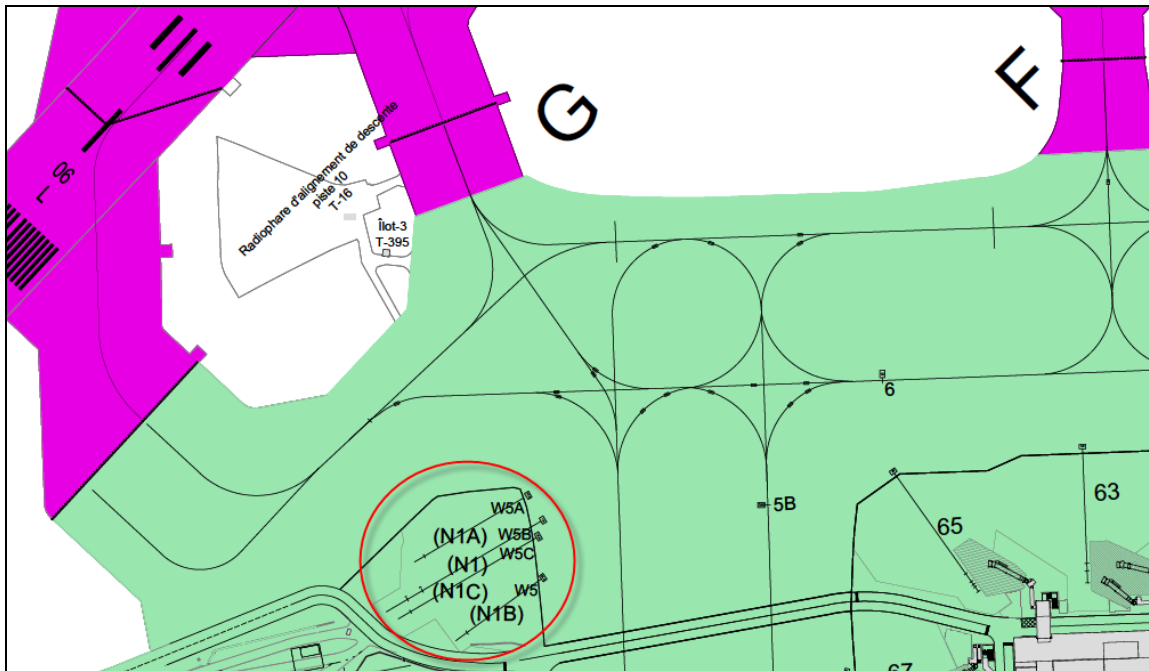
Holding Bay 06R Capacity – New Configuration

- The new configuration will allow the bay to contain 2 aircraft simultaneously.
- Aircraft with a wingspan of 65m (213 feet) or less must use the South line.
- Aircraft with a wingspan of more than 65m (213 feet) must use the North line.



Revised Parking Identification from N1 to W5

As of 15 June 2017, Stands N1, N1A, N1B, and N1C on the Main Apron will be renamed W5, W5A, W5B, and W5C.



Ground Surface Repairs

Ground surface repairs will consist of punctual work, generally conducted at night between April 2017 and November 2017:

- Intersection of Runway 06L-24R and Runway 10-28.
- Runway 06R-24L.
- Taxiway Alpha.
- Taxiway Romeo and Taxiway Lima.
- Main Apron.

James Ferrier
Manager, Aeronautical Information Management