

AIP CANADA (ICAO) SUPPLEMENT 14/14

BLASTING ACTIVITY NORTH OF SCHEFFERVILLE APRIL 2014 TO APRIL 2017

Tata Steel Minerals Canada is performing blasting activities three times a day, between sunrise and sunset, in several areas north-northwest of Schefferville Airport (CYKL).

The areas are described here:

Blasting April 2014 to November 2016

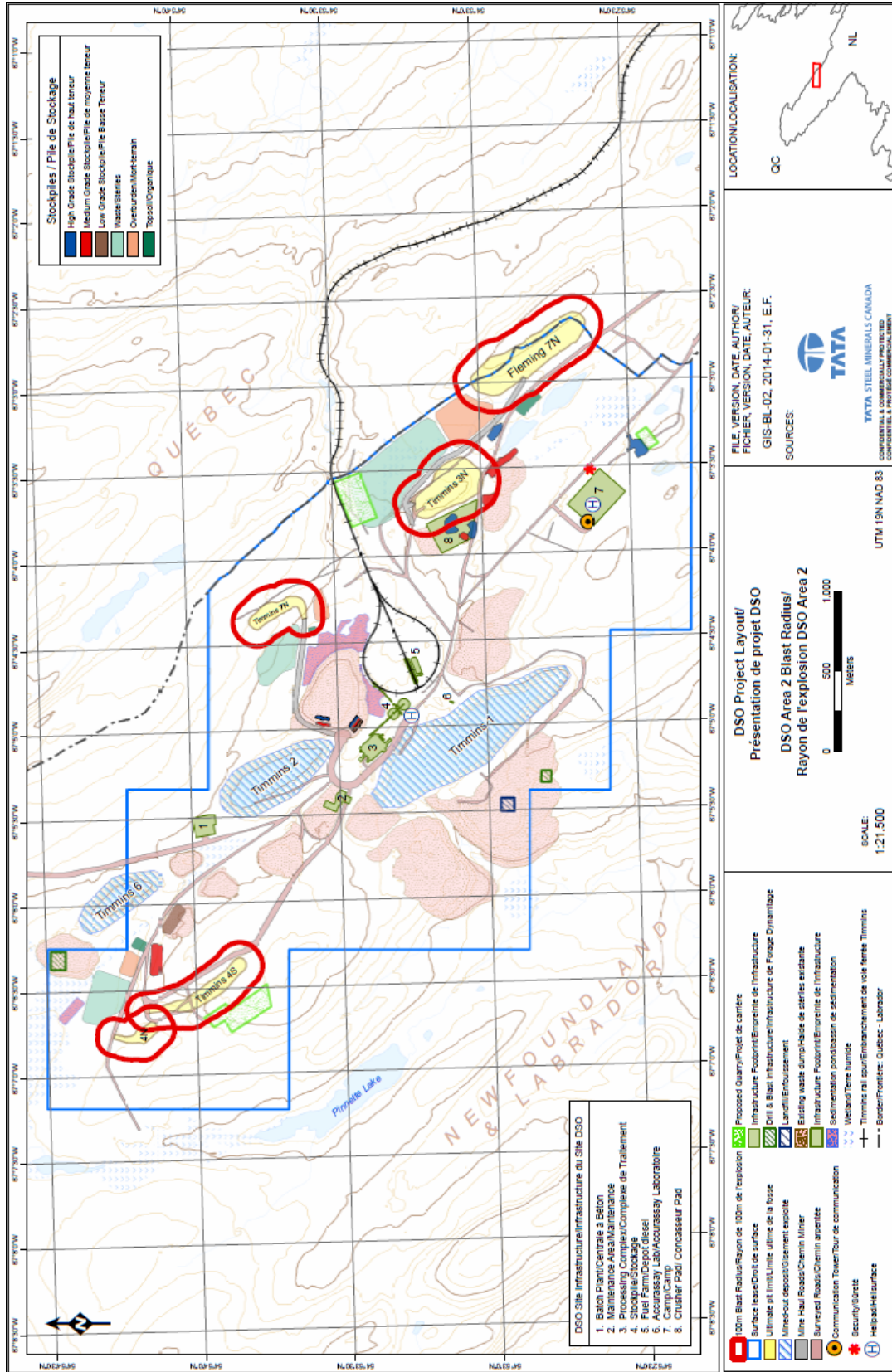
Site Coordinates	Designation	Approximate Distance and Bearing from CYKL	Radius	Height
54°52'50"N 67°02'55"W	Fleming 7N	9,6 NM NNW	0,25 NM	250 ft AGL
54°54'03"N 67°06'38"W	Timmins 4	12 NM NNW	0,35 NM	250 ft AGL
54°53'43"N 67°04'19"W	Timmins 7N	10,7 NM NNW	0,27 NM	250 ft AGL

Blasting April 2015 to April 2017

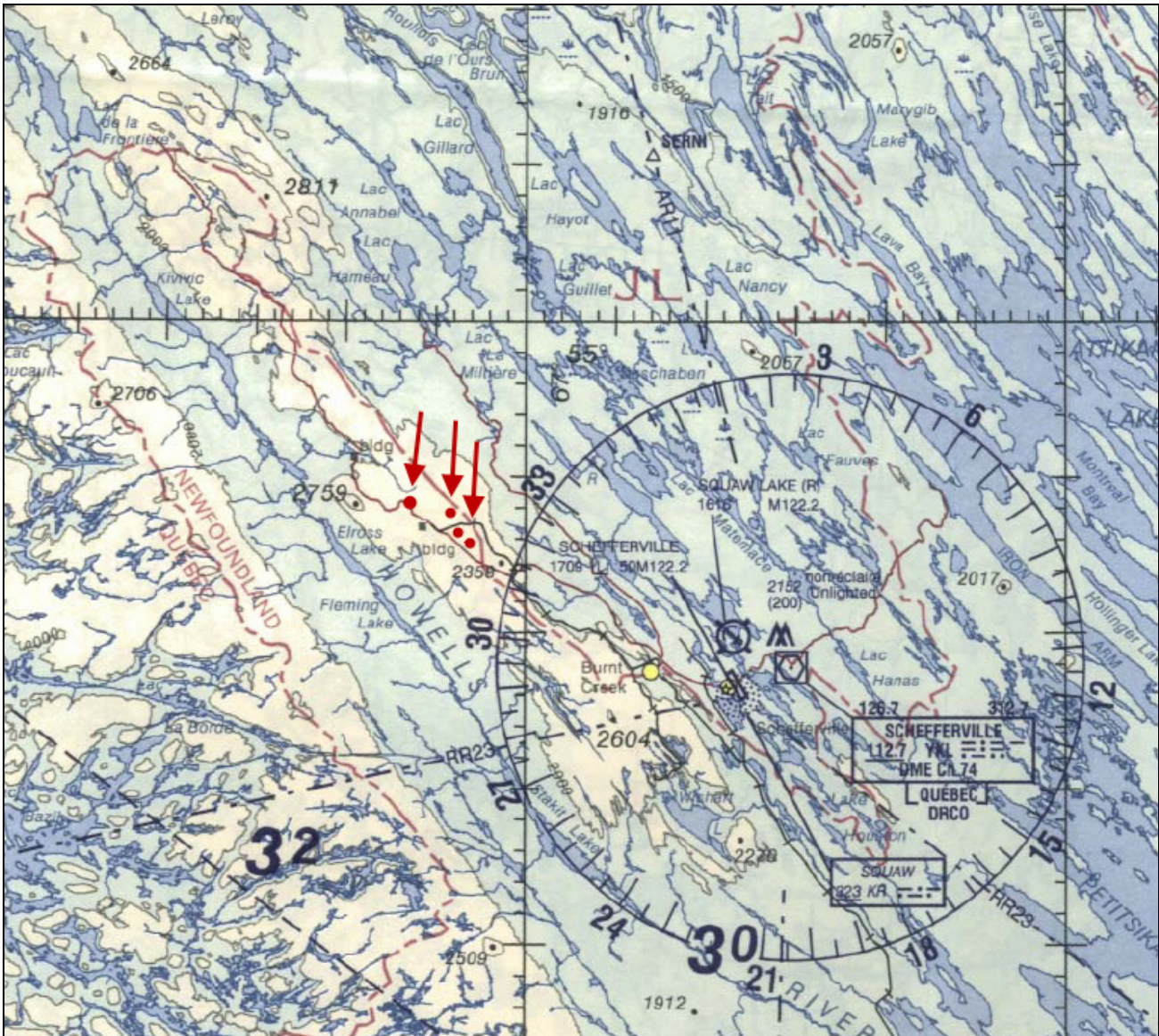
Site Coordinates	Designation	Approximate Distance and Bearing from CYKL	Radius	Height
54°53'05"N 67°03'36"W	Timmins 3N	10 NM NNW	0,27 NM	250 ft AGL

Air displacement may affect small aircraft at a greater distance and altitude than what is indicated in the above table.

The approximate location of the two areas is indicated in red on the maps below.



FOR ILLUSTRATION PURPOSES ONLY – DO NOT USE FOR NAVIGATION



FOR ILLUSTRATION PURPOSES ONLY – DO NOT USE FOR NAVIGATION

Martin J. Eley
Director General
Civil Aviation