

ILS or NDB RWY 11

D.E.M.A.R.

DRYDEN REGIONAL
DRYDEN ONTARIO

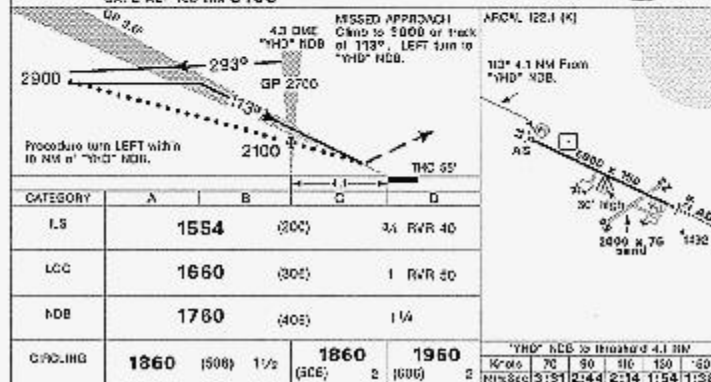
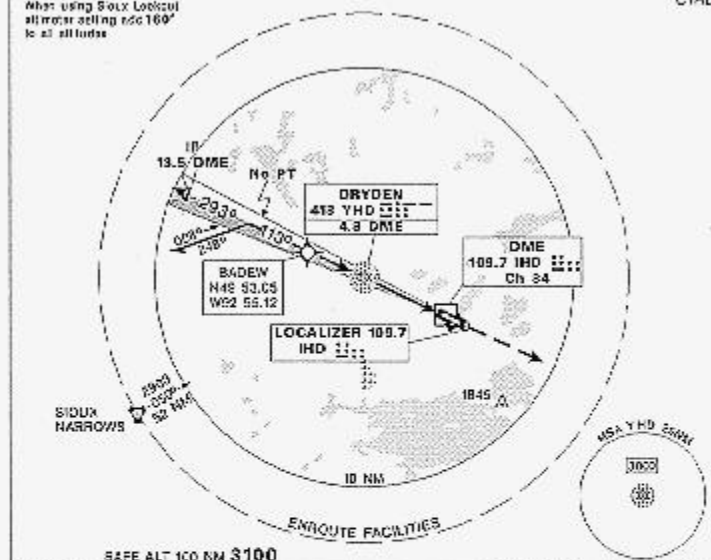
RADIO (RCO)
THUNDER BAY
122.1 (MF 5 NM)

ELEV 1354

TDZE 11 1354

CYHD

When using Solex Lateral
slit trans setting rsc 100°
to all ludes



ILS or NDB RWY 11
EFF 30 MAR 95 CHANGE: A/D name; Comm boxes; Landing chart

DRYDEN REGIONAL
DRYDEN ONTARIO
SAC031